

**PROCLAMATION COINS**



1291\*  
**Brazil**, Maria I, gold six thousand four hundred reis, 1791R (Rio de Janeiro) (KM.226.1). *Edge filed in part, otherwise nearly extremely fine.*

\$1,000

Private purchase from R.Lobel 5/1/1978 and L.Filacouridis Collection.



1292\*  
**Great Britain**, George III, guinea, fifth head or spade type, 1793 (S.3729). *Cleaned, otherwise nearly extremely fine.*

\$750

Private purchase from R.Lobel 7/2/1976 and L.Filacouridis Collection.



1293\*  
**Great Britain**, George III, guinea, fifth head or spade type, 1798 (S.3729). *Nearly extremely fine with some mint bloom.*

\$850

Private purchase from R.Lobel 2/8/1979 and L.Filacouridis Collection.



1294\*  
**Great Britain**, George III, half guinea, fifth head or spade type, 1793 (S.3735). *Nearly very fine/very fine.*

\$300

Private purchase from R.Lobel 8/10/1976 and L.Filacouridis Collection.



1295\*  
**Great Britain**, George III, shilling 1787 (S.3743). *Extremely fine.*

\$100



1296\*  
**Great Britain**, George III, copper cartwheel twopence, 1797 (S.3776). *Minor edge nicks, dark toned, otherwise very fine.*

\$150

1297  
**Great Britain**, George III, copper cartwheel twopence, 1797 (S.3776). *A few edge bumps as usual, otherwise nearly very fine.*

\$120



1298\*  
**Great Britain**, George III, copper cartwheel penny, 1797 (S.3777). *Nearly extremely fine.*

\$150

Ex Alan Jordan Collection.

1299  
**Great Britain**, George III, copper halfpenny, 1799 (S3778). *Red brown, good very fine.*

\$70



1300\*  
**India**, E.I.C. Bengal Presidency, Murshidabad type gold mohur (1793) (KM.102). *Nearly uncirculated.*

\$900

Private purchase from R.Lobel 6/10/1978 and L.Filacouridis Collection.



1301\*  
**India**, Madras Presidency, Indian style coinage, Hindu system, gold star pagoda, c1740-1807, struck at Madras Mint, (3.45g), obverse, crude half standing figure of a deity, reverse, five pointed star within dotted borders (Pr.9; KM.303). *Extremely fine, scarce.*

\$300

Ex Alan Jordan Collection.

The design for this coinage was determined in 1740 and declared the standard pagoda of Madras 9th April 1741. Referred to in the Company's records as the 'Madras current or star pagoda'.

1302  
**India**, Madras Presidency, gold pagoda (1810) (KM.356). *Uncirculated.*

\$200



1303\*  
**Mexico**, Charles III, gold eight escudos, 1794FM, Mexico City Mint (KM.159; Fr.43). *Good very fine.*

\$1,800



1304\*  
**Netherlands**, Holland, gold ducat 1769 (KM.12). *Slightly rippled flan, otherwise very fine.*

\$300

Ex Alan Jordan Collection and purchased from Noble Numismatics Sale 83 (lot 1256).

## HOLEY DOLLAR AND DUMPS

### Historic Provenanced Holey Dollar Listed by Hyman



1305\*  
**New South Wales**, five shillings or holey dollar, 1813, struck on a Charles III Mexico City Mint eight reales, 1804, dies I/3:A/3 (Mira-Noble 1804/11; Spalding 133). *Countermarks sharp and clear; central hole not fully punched out in one quarter (i.e. off centre), some dark oxidation (from burial) on edge of matrix, otherwise attractive grey toned, good very fine and very rare, an interesting specimen with an historical provenance.*

\$130,000

Ex Newcastle Hoard (Hyman p.58), Dr.Thomas Evans, H.C.Dangar, R.N.Dangar (Lawson's 10 Feb 1953, lot 3) L.J. Dale, W.J.Noble, C.E.Pitchfork, G.Snelgrove and D.G.L.Worland Collections, Spink Australia in 1983 and Noble Numismatics Sale 85 (lot 1126).



**Outstanding NSW Fifteen Pence**



1306\*

**New South Wales**, fifteen pence or dump, 1813 (Mira dies A/1). *Traces of chin and mouth of Charles IV on obverse, traces of arms on reverse, well struck with full rim of denticles on the obverse, slightest friction on high points takes this away from extremely fine, attractive grey toning, good very fine and one of the finest known.*

\$90,000

Ex Spink Australia Sale 1 (lot 518) and Sale 21 (lot 792).



1307\*

**New South Wales**, fifteen pence or dump, 1813 (Mira dies D/2). *Traces of reverse of original coin on obverse and trace of Charles III portrait on the reverse, grey toned good fine and rare.*

\$20,000

Ex B.J.Hibbard Collection.



1308\*

**New South Wales**, fifteen pence or dump, 1813 (Mira dies A/1). *Traces of reverse of last coin on obverse at 4 o'clock, attractive gun metal tone, old contemporary dents between legend on reverse, otherwise very fine and rare thus.*

\$12,000

**AUSTRALIAN GOLD COINS**

**ADELAIDE ASSAY OFFICE**



1309\*

**Adelaide pound**, 1852, second type with crenellated inner circle on the reverse. *Minor scratch on reverse, otherwise good extremely fine/extremely fine, an attractive early strike from the dies and rare in this condition.*

\$40,000

SYDNEY MINT SOVEREIGNS



1310\*  
**Adelaide pound**, second type, 1852, with crenellated inner circle on reverse. *Early die state, hairline scratch on reverse, reverse rim bruise at 11.30, has been brushed to clean, otherwise nearly extremely fine and rare.*

\$25,000

Ex Spink Australia Sale 25 (lot 2333).



1312\*  
**Queen Victoria**, first type, 1855, with filleted head of Victoria left, by James Wyon. *Nearly extremely fine, old cut between eye and ear.*

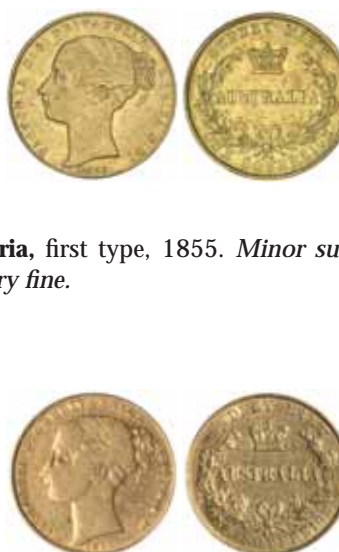
\$4,500

Ex Spink Australia Sale 17 (lot 1056) and Spink Noble Sale 36 (lot 1311).



1311\*  
**Adelaide pound**, second type, 1852, with crenellated inner circle on the reverse. *Later die state, five dots above (2)2 C(arats), surface marks, rim bruise and possible filing, possibly ex mount, otherwise good very fine and rare.*

\$12,000



1313\*  
**Queen Victoria**, first type, 1855. *Minor surface marking, otherwise very fine.*

\$4,000

1314\*  
**Queen Victoria**, first type, 1855. *Good fine.*

\$3,000

In a slab by PCGS as VF30.





1315\*  
**Queen Victoria**, first type, 1856. *Minor rim nicks and field marks, some dirt in reverse denticles, lettering and wreath, original surface, good very fine and rare in this condition.*  
 \$7,000

Ex Reserve Bank of Australia Sale (lot 1552).



1316\*  
**Queen Victoria**, second type, 1857, with wreathed head of Victoria left by L.C.Wyon. *Extremely fine and rare in this condition.*  
 \$3,200

Ex Spink Noble Sale 43 (lot 1624).



1317\*  
**Queen Victoria**, second type, 1858. *Good very fine and rare.*  
 \$1,500



1318\*  
**Queen Victoria**, second type, 1859. *Good extremely fine and rare in this condition.*

\$2,400

Ex Noble Numismatics Sale 62 (lot 1426).



1319\*  
**Queen Victoria**, second type, 1859. *Surface marks, otherwise with considerable brilliance in the lettering and devices, extremely fine/good extremely fine.*

\$1,500



1320\*  
**Queen Victoria**, second type, 1860. *Surface marks, otherwise extremely fine and rare.*

\$3,400

Ex Spink Australia Sale 9 (lot 1247) and Noble Numismatics Sale 46 (lot 1518).



1321\*  
**Queen Victoria**, second type, 1861. *Some mint bloom, good extremely fine and rare in this condition.*

\$2,000

Ex Noble Numismatics Sale 53 (lot 3507).



1322\*  
**Queen Victoria**, second type, 1861. *Lightly toned, relatively unmarked surfaces, extremely fine and rare in this condition.*

\$1,200

Ex Noble Numismatics Sale 48 (lot 1606).



1323\*

**Queen Victoria**, second type, 1862. *Good very fine and rare in this condition.*

\$1,500



1328\*

**Queen Victoria**, second type, 1866. *Considerable original mint bloom, choice uncirculated and rare in this condition.*

\$4,000



1324\*

**Queen Victoria**, second type, 1863. *Rim filed at 12.30 o'clock on obverse, otherwise considerable brilliance, nearly uncirculated and rare in this condition.*

\$2,400



1329\*

**Queen Victoria**, second type, 1866. *Subdued underlying frosty mint bloom, nearly uncirculated.*

\$2,500



1325\*

**Queen Victoria**, second type, 1864. *Toned, with underlying original mint bloom, uncirculated and rare in this condition.*

\$5,000



1330\*

**Queen Victoria**, second type, 1867. *Die break rim through A of Victoria, slight clashing, minor surface marking, otherwise extremely fine/good extremely fine.*

\$750



1326\*

**Queen Victoria**, second type, 1865. *Extremely fine or better and rare in this condition.*

\$1,700



1331\*

**Queen Victoria**, second type, 1868. *Uncirculated/choice uncirculated and rare in this condition.*

\$2,400

Ex Noble Numismatics Sale 62 (lot 1442).



1327\*

**Queen Victoria**, second type, 1865. *Graffito X scratched under bust beside date, otherwise nearly extremely fine.*

\$1,000



1332\*

**Queen Victoria**, second type, 1868. *Subdued nearly full original mint bloom, uncirculated.*

\$1,500

In a slab by PCGS as MS61.



1333\*  
**Queen Victoria**, second type, 1870. *Considerable mint bloom, nearly uncirculated.*

\$1,000



1334\*  
**Queen Victoria**, second type, 1870. *Original mint bloom, nearly uncirculated.*

\$1,000

**SYDNEY MINT HALF SOVEREIGNS**



1335\*  
**Queen Victoria**, first type, 1855, with filleted head of Victoria left by James Wyon. *Evenly worn, fine/good fine and extremely rare in this grade, probably the ninth or tenth finest known.*

\$30,000



1336\*  
**Queen Victoria**, first type, 1856. *Metal flaw on reverse field, nearly extremely fine and rare in this condition.*

\$5,500

**Error Legend Rarity**



1337\*  
**Queen Victoria**, second type, 1858, first E in sovereign over an R placed there in error. *Scratches across portrait, otherwise relatively unworn, good very fine and extremely rare, possibly the finest known.*

\$15,000

Ex Noble Numismatics Sale 66 (lot 1250).





1338\*

**Queen Victoria**, second type, 1859. *Brushed, otherwise good very fine, traces of original mint bloom and rare in this state.*

\$2,500

In a slab by NGC as AU details surface hairlines.



1339\*

**Queen Victoria**, second type, 1862. *Pin prick in left obverse, otherwise good very fine and rare.*

\$2,500



1340\*

**Queen Victoria**, second type, 1863. *Good very fine and rare in this condition.*

\$1,900



1341\*

**Queen Victoria**, second type, 1866. *Surface marks, otherwise nearly extremely fine and rare in this condition.*

\$2,000



1342\*

**Queen Victoria**, second type, 1866. *Scuff marks on neck, otherwise nearly extremely fine and rare thus.*

\$1,500

## IMPERIAL SOVEREIGNS - SHIELD REVERSE



1343

**Queen Victoria**, 1871 Sydney, incuse WW (McD.118b). *Extremely fine.*

\$600

Ex Alan Jordan Collection.



1344\*

**Queen Victoria**, 1871 Sydney, incuse WW (McD.118b). *Extremely fine.*

\$600

Ex The Robert C.Hall Estate, Bowers and Ruddy Galleries, October 26-28, 1978, lot 3063, with their ticket.



1345\*

**Queen Victoria**, 1874 Melbourne. *Good extremely fine.*

\$480

Ex Douro Cargo (lot 1065) and Noble Numismatics Sale 53 (lot 3562).



1346\*

**Queen Victoria**, 1877 Sydney. *Extremely fine/nearly uncirculated.*

\$500

Ex The Robert C.Hall Estate, Bowers and Ruddy Galleries, October 26-28, 1978, lot 3065, with their ticket.



1347\*

**Queen Victoria**, 1879 Sydney. *Nearly uncirculated/uncirculated.*

\$600

Ex Noble Numismatics Sale 99 (lot 1434).





1348\*  
**Queen Victoria**, 1886 Melbourne. *Surface marked, otherwise good very fine/nearly extremely fine and very rare.*  
 \$11,000



1349\*  
**Queen Victoria**, 1886 Sydney. *Nearly uncirculated.*  
 \$500  
 Ex The Robert C.Hall Estate, Bowers and Ruddy Galleries, October 26-28, 1978, lot 3070, with their ticket.



1350\*  
**Queen Victoria**, 1887 Sydney. *Surface marks, otherwise extremely fine/good extremely fine.*  
 \$450

**IMPERIAL SOVEREIGNS - ST GEORGE REVERSE**



1351\*  
**Queen Victoria**, 1871 Sydney, small BP. *Nearly extremely fine.*  
 \$350



1352\*  
**Queen Victoria**, 1873 Melbourne. *Good extremely fine.*  
 \$480

Private purchase from Monetarium May 1995.



1353\*  
**Queen Victoria**, 1874 Sydney. *Some contact marks, otherwise nearly uncirculated.*  
 \$800

Ex Douro Cargo (lot 861 part) and Noble Numismatics Sale 53 (lot 3639).



1354\*  
**Queen Victoria**, 1876 Melbourne. *Nearly uncirculated.*  
 \$480  
 Ex 'The Douro Cargo'.



1355  
**Queen Victoria**, 1876 Sydney. *Extremely fine/good extremely fine.*  
 \$300

1356\*  
**Queen Victoria**, 1879 Sydney. *Nearly uncirculated and rare in this condition.*  
 \$1,500



1357\*  
**Queen Victoria**, 1880 Sydney no BP (McD.158c). *Nearly uncirculated.*

\$600



1362\*  
**Queen Victoria**, 1884 Sydney. *Nearly uncirculated.*

\$500

Ex Alan Jordan Collection.



1358\*  
**Queen Victoria**, 1881 Melbourne (McD.161). *Nearly uncirculated.*

\$600

Ex 'The Douro Cargo'.



1363\*  
**Queen Victoria**, 1885 Sydney. *Nearly uncirculated.*

\$400

1364  
**Queen Victoria**, Jubilee head, 1887 Melbourne (McD.175b). *Nearly uncirculated.*

\$350



1359\*  
**Queen Victoria**, 1881 Melbourne, no BP (McD.161a). *Nearly uncirculated/uncirculated.*

\$600

Ex 'The Douro Cargo'.



1365\*  
**Queen Victoria**, Jubilee head, 1887 Sydney (McD.174). *Nearly uncirculated and rare in this condition.*

\$1,500



1360\*  
**Queen Victoria**, 1881 Melbourne, no BP (McD.161a). *Cleaned, good extremely fine.*

\$600



1366\*  
**Queen Victoria**, 1888 Melbourne (McD.177a). *Nearly uncirculated and rare.*

\$400



1361\*  
**Queen Victoria**, 1882 Sydney. *Nearly uncirculated.*

\$350



1367\*  
**Queen Victoria**, 1889 Sydney (McD.178). *Nearly uncirculated.*

\$400

1368  
**Queen Victoria**, 1892 Melbourne. *Uncirculated.*

\$350





1369\*  
**Queen Victoria**, Jubilee head, 1893 Melbourne. *Nearly uncirculated.*

\$500

Ex The Robert C.Hall Estate, Bowers and Ruddy Galleries, October 26-28, 1978, lot 3073, with their ticket.

1370  
**Queen Victoria**, 1898 Melbourne. *Uncirculated.*

\$350



1371\*  
**Queen Victoria**, 1899 Perth. *Nearly extremely fine.*

\$450

1372  
**Queen Victoria**, 1899 Sydney. *Uncirculated - choice uncirculated. (10)*

\$3,700



1373\*  
**Queen Victoria**, 1900 Sydney. *Gem, uncirculated.*

\$600

Ex Bowers and Ruddy Galleries, with their ticket.

1374  
**Queen Victoria**, 1901 Perth. *Extremely fine.*

\$320

Ex Alan Jordan Collection.



1375\*  
**Edward VII**, 1903 Melbourne. *Ex mint bag, uncirculated.*

\$350



1376\*  
**Edward VII**, 1908 Perth. *Uncirculated.*

\$400

1377  
**George V**, 1911, 1912 and 1914 Sydney. *Good extremely fine. (3)*

\$1,000

Ex M.Ward Collection.



1378\*  
**George V**, 1914 Sydney. *Gem, uncirculated.*

\$400

Ex KJC Online Auction 39, lot 43, with their ticket.



1379\*  
**George V**, 1924 Melbourne. *Gem, uncirculated.*

\$450

Ex The Collections of Charles M.Johnson and Dr Ivan H.Meyer, Bowers and Ruddy Galleries, February 9-11, 1978, lot 3315, with their ticket.



1380\*  
**George V**, 1924 Perth. *Nearly uncirculated.*

\$450



1381\*  
**George V**, 1925 Sydney. *Struck from clashed obverse die, good extremely fine.*

\$350

IMPERIAL HALF SOVEREIGNS



1382\*  
**George V**, 1926 Perth. *Good extremely fine and very scarce.*

\$1,500

Ex W.E.Purnell Collection.



1383\*  
**George V**, 1926 Perth. *Good extremely fine and very scarce.*

\$1,300



1384\*  
**George V**, 1927 Perth. *Nearly uncirculated/uncirculated and scarce.*

\$600

1385  
**George V**, small head, 1929-1931 Perth. *Nearly uncirculated - uncirculated.* (3)

\$1,050



1386\*  
**George V**, small head, 1930 Melbourne. *Nearly uncirculated.*

\$500



1387\*  
**Queen Victoria**, 1871 Sydney. *Obverse lightly brushed, nearly uncirculated.*

\$4,000



1388\*  
**Queen Victoria**, 1871 Sydney. *Good extremely fine and rare in this condition.*

\$2,500



1389\*  
**Queen Victoria**, 1872 Sydney. *Nearly uncirculated and rare in this condition.*

\$2,800

Ex Reserve Bank of Australia Sale (lot 613).



1390\*  
**Queen Victoria**, 1873 Melbourne. *Clashed die, obverse with die break through 'A' of Gratia, obverse and reverse lightly wiped, nearly uncirculated.*

\$3,250







1391\*  
**Queen Victoria**, 1880 Sydney. *Nearly extremely fine/ extremely fine.*

\$1,000



1395\*  
**Queen Victoria**, 1883 Sydney (McD.25a). *Nearly uncirculated and rare in this condition.*

\$1,250



1392\*  
**Queen Victoria**, 1881 Sydney. *Brush marks on obverse, otherwise nearly uncirculated.*

\$1,000

Taken from a jar in cornerstone of S.Hoffnung & Co Ltd premises 165/7 Pitt St Sydney, resumed by Commonwealth Government, 12th December 1936. Jar was placed there in 1881.



1396\*  
**Queen Victoria**, 1886 Sydney. *Nearly uncirculated and very rare in this condition.*

\$4,000

Private purchase from Winsor & Sons, 10 September 2007.



1393\*  
**Queen Victoria**, 1882 Sydney. *Good very fine and rare.*

\$1,500

In a slab by PCGS as XF45.



1397\*  
**Queen Victoria**, young head, 1887 Melbourne. *Contact marks and edge knock on obverse, die break on reverse, nearly extremely fine.*

\$1,000



1394\*  
**Queen Victoria**, 1883 Sydney (McD.25a). *Dusty part tone, original mint bloom, nearly uncirculated.*

\$1,500

In a slab by PCGS as AU50.



1398\*  
**Queen Victoria**, young head, 1887 Sydney. *Good very fine.*

\$700

In a slab by PCGS as XF45.



1399\*

**Queen Victoria**, Jubilee head, 1887 Melbourne, (McD.33a). *Well struck, nearly uncirculated.*

\$1,400



1404\*

**Queen Victoria**, old head, 1893 Sydney. *Good extremely fine.*

\$350



1400\*

**Queen Victoria**, Jubilee head, 1887 Sydney (McD.32a). *Obverse brilliance, uncirculated and rare in this condition.*

\$1,600



1405\*

**Queen Victoria**, 1896 Melbourne. *Choice uncirculated and rare in this condition, one of the finest known.*

\$1,500

Ex Reserve Bank of Australia Sale (lot 751).



1401\*

**Queen Victoria**, Jubilee head, 1887 Sydney (McD.32a). *Good extremely fine/nearly uncirculated.*

\$1,500



1406\*

**Queen Victoria**, 1897 Sydney. *Considerable mint bloom, uncirculated and rare in this condition.*

\$1,000

In a slab by PCGS as AU55.



1402\*

**Queen Victoria**, Jubilee head, 1887 Sydney (McD.32a). *Minor surface marks on obverse, otherwise attractive peripheral tone with brilliance, nearly uncirculated.*

\$1,400



1407\*

**Queen Victoria**, 1899 Melbourne. *Uncirculated and rare in this condition, one of the finest known.*

\$1,400

Private purchase from Winsor & Sons, 15 October 2005.



1403\*

**Queen Victoria**, old head, 1893 Sydney. *Nearly uncirculated.*

\$900

In a slab by PCGS as AU53.



1408\*

**Queen Victoria**, 1900 Melbourne. *Nearly extremely fine and rare in this condition.*

\$1,000

In a slab by PCGS as AU53.





1409\*  
**Queen Victoria**, 1900 Perth. *Minor contact marks on obverse, otherwise subdued mint bloom, uncirculated and rare, one of the finest known.*

\$2,400

Ex Reserve Bank of Australia Sale (lot 853).



1410\*  
**Queen Victoria**, 1900 Sydney. *Good extremely fine.*

\$850

In a slab by PCGS as AU58.



1411\*  
**Edward VII**, 1902 Sydney. *Uncirculated.*

\$350

Private purchase from Monetarium Hurstville in 1991.



1412\*  
**Edward VII**, 1904 Perth. *Nearly extremely fine and rare thus.*

\$750



1413\*  
**Edward VII**, 1906 Sydney. *Good extremely fine.*

\$200



1414\*  
**Edward VII**, 1906 Melbourne. *Nearly extremely fine and rare in this condition.*

\$800

In a slab by PCGS as AU50



1415\*  
**Edward VII**, 1908 Sydney. *Good extremely fine.*

\$200

Ex M.Ward Collection.

1416  
**George V**, 1915 Perth. *Good extremely fine.*

\$200



1417\*  
**George V**, 1915 Sydney. *Gem, uncirculated.*

\$200



1418\*  
**George V**, 1918 Perth. *Rim filed obverse at 4 o'clock, otherwise extremely fine and rare.*

\$3,000

## PATTERNS AND PROOFS

### Choice & Rare Pattern Square Penny



1419\*

**George V**, Melbourne Mint pattern kookaburra square penny, 1921 in cupro-nickel (3.90 grams) by D.Richardson (R.type 11, McD.type 12). *Good extremely fine and rare.*

\$40,000

Ex Noble Numismatics Sale 84 (lot 1365).

### Very Rare Proof Florin 1916M - One of the First Australian Minted Coins



1420\*

**George V**, Melbourne Mint proof or specimen florin, 1916M. *Uneven blue grey toned patina from being in the plush presentation set case, friction on cheek bone, otherwise FDC and very rare.*

\$37,500

Ex IAG Sale 66 (September 2007, lot 372).



**Proof Canberra Commemorative Florin**



1421\*

**George V**, Melbourne Mint proof florin, 1927 Canberra commemorative. *FDC and rare.*

\$30,000

**Proof 1934 Penny**



1422\*

**George V**, Melbourne Mint proof penny, 1934. *Brown and red blue toned, nearly FDC and very rare.*

\$15,000

Choice Proof Crown 1937



1423\*

**George V**, Melbourne Mint proof halfpenny, 1934. *Dark purple brown toning over mostly red mint bloom, nearly FDC and very rare.*

\$12,500

1424\*

**George VI**, Melbourne Mint proof crown, 1937. *Brilliant FDC and rare.*

\$20,000

Private purchase from M.R.Roberts in 1991 with ticket.





1425\*  
**George VI**, Melbourne Mint proof crown, 1937. *Tiny dent on cheek, larger dent behind ear; otherwise brilliant nearly FDC and rare.*

\$20,000

In a slab by PCGS as PR62.

1426  
**Elizabeth II**, Melbourne Mint proof set, 1955. *FDC.* (4)  
 \$600

Ex M.R.Roberts in 1993.

1427  
**Elizabeth II**, Melbourne Mint proof set, 1955. *The penny with toned areas, otherwise FDC.* (4)  
 \$750

In PCGS slabs as PR64, PR66, PR65 and PR64RB.



1428\*  
**Elizabeth II**, Melbourne Mint proof penny, 1955. *Full red, FDC.*

\$400

1429  
**Elizabeth II**, Melbourne Mint proof penny, 1955. *Full red, FDC.*

\$350



1430\*  
**Elizabeth II**, Perth Mint proof set, 1955. *Full red, FDC and rare.* (2)

\$12,000

Private purchase from Klaus Ford.



1431\*  
**Elizabeth II**, Melbourne Mint proof set, 1956. *FDC.* (5)  
 \$1,250

1432  
**Elizabeth II**, Melbourne Mint proof set, 1956. *The penny brilliant red, FDC.* (5)

\$1,000

In PCGS slabs as PR64, PR64, PR65, PR65 and PR64RD.





1439  
**Elizabeth II**, Melbourne Mint proof set, 1957. *Some toning, FDC.* (4)  
 \$600



1440  
**Elizabeth II**, Melbourne Mint proof set, 1957. *FDC.* (4)  
 \$500



In KJC Coins (Australia) sealed packets of sale.



1441\*  
**Elizabeth II**, Perth Mint proof penny, 1957. *Matte finish, FDC.*  
 \$700

1433\*  
**Elizabeth II**, Melbourne Mint proof set, 1956. *Purple toned penny, FDC.* (5)  
 \$800



1434  
**Elizabeth II**, Melbourne Mint proof set, 1956. *Penny toned, red, FDC.* (5)  
 \$750

1442\*  
**Elizabeth II**, Perth Mint proof penny, 1957. *Matte finish, FDC.*  
 \$700

1435  
**Elizabeth II**, Melbourne Mint proof set, 1956. *The penny brilliant full red reverse, FDC.* (5)  
 \$700

Private purchase from M.R.Roberts, 12/12/1994.



1436  
**Elizabeth II**, Melbourne Mint proof threepence, sixpence and shilling, 1956. *In 2x2 holders in a coin album, the shilling with some obverse marks, extremely fine - FDC.* (3)  
 \$200

1443\*  
**Elizabeth II**, Perth Mint proof penny, 1957. *Matte finish, full mint red, FDC.*  
 \$650



1437\*  
**Elizabeth II**, Perth Mint proof penny, 1956. *Full red, FDC and rare.*  
 \$6,000

Private purchase from Downie's & Sherwood.



1438  
**Elizabeth II**, Melbourne Mint proof set, 1957. *Except for the florin, toned and brilliant, FDC.* (4)  
 \$600

1444\*  
**Elizabeth II**, Perth Mint proof penny, 1957. *Matte finish, slight spotting, otherwise FDC.*  
 \$600

In slabs by PCGS as PR65, PR65, PR65 and PR66.



1450\*  
**Elizabeth II**, Perth Mint proof penny, 1958. *Light tone, red FDC.*

\$450

1451  
**Elizabeth II**, Perth Mint proof penny, 1958. *Finger print stains, otherwise nearly FDC.*

\$200

1452  
**Elizabeth II**, Perth Mint proof pennies, 1958 and 1962. *FDC. (2)*

\$500

1453  
**Elizabeth II**, Perth Mint proof penny, 1958. *Full red, nearly FDC.*

\$300

Private purchase from M.R.Roberts in 1994.

1445\*  
**Elizabeth II**, Melbourne Mint proof set, 1958. *FDC. (5)*

\$1,100

1446  
**Elizabeth II**, Melbourne Mint proof set, 1958, in a sealed pack. *The penny full red, FDC. (5)*

\$700

Private purchase from M.R.Roberts in 1994.

1447  
**Elizabeth II**, Melbourne Mint proof silver set, 1958. *Toned, FDC. (4)*

\$500

In slabs by PCGS as PR65, PR65, PR64 and PR64.

1448  
**Elizabeth II**, Melbourne and Perth Mint proof pennies, 1958; Melbourne Mint proof shilling, 1960. *Extremely fine - FDC. (3)*

\$200



1449\*  
**Elizabeth II**, Perth Mint proof penny, 1958. *Full mint red, FDC.*

\$750



1454\*  
**Elizabeth II**, Melbourne Mint proof set, 1959. *FDC. (6)*

\$1,500



1455

**Elizabeth II**, Melbourne Mint proof set, 1959. *Penny with olive tone, halfpenny dull red with obverse spotting, otherwise, FDC.* (6)

\$1,200

Each in PCGS slab as RP65, PR65, PR66, PR67, PR64BN, PR64RB.

1456

**Elizabeth II**, Melbourne Mint proof silver set, 1959. *FDC.* (4)

\$600

Private purchase from M.R.Roberts in 1994.



1457\*

**Elizabeth II**, Perth Mint proof penny, 1959. *Full red, FDC.* \$700



1458\*

**Elizabeth II**, Perth Mint proof penny, 1959. *Nearly FDC.* \$900

1459

**Elizabeth II**, Melbourne Mint proof set, 1960. *Slight toning, FDC.* (4)

\$550



1460\*

**Elizabeth II**, Melbourne Mint proof set, 1960. *FDC.* (4) \$500



1461\*

**Elizabeth II**, Perth Mint proof set, 1960. *Full mint red, FDC.* (2)

\$1,250



1462\*

**Elizabeth II**, Perth Mint proof set, 1960. *Slightest toning on halfpenny, otherwise full red, FDC.* (2)

\$1,200

1463

**Elizabeth II**, Perth Mint proof set, 1960. *FDC.* (2) \$700

Each in a slab by PCGS as PR66RD and PR65RD.



1464\*

**Elizabeth II**, Perth Mint proof set, 1960. *Light toning, full red FDC.* (2)

\$700





1465\*  
**Elizabeth II**, Perth Mint proof set, 1960. *Slight dark area on reverse of halfpenny, otherwise FDC. (2)*  
 \$700

1466  
**Elizabeth II**, Melbourne Mint proof set, 1961. *FDC. (4)*  
 \$400

1467  
**Elizabeth II**, Melbourne Mint proof set, 1961. *Slight toning, FDC. (4)*  
 \$600



1468\*  
**Elizabeth II**, Perth Mint proof set, 1961. *Full red, FDC. (2)*  
 \$1,000



1469\*  
**Elizabeth II**, Perth Mint proof set, 1961. *FDC. (2)*  
 \$750

1470  
**Elizabeth II**, Perth Mint proof set, 1961. *Slight toning, otherwise FDC. (2)*  
 \$700

1471  
**Elizabeth II**, Perth Mint proof set, 1961. *Toned in areas, otherwise nearly FDC. (2)*  
 \$300



1472\*  
**Elizabeth II**, Perth Mint proof penny, 1961. *Toned lower right quarter on reverse, otherwise brilliant red FDC.*  
 \$250

1473  
**Elizabeth II**, Perth Mint proof penny, 1961, proof halfpenny, 1963. *Finger print on first, nearly FDC. (2)*  
 \$200

1474  
**Elizabeth II**, Perth Mint proof halfpenny, 1961. *Toned, nearly FDC.*  
 \$200

1475  
**Elizabeth II**, Melbourne Mint proof set, 1962. *With black plastic case of issue, FDC. (4)*  
 \$350



1476\*  
**Elizabeth II**, Perth Mint proof set, 1962. *Full mint red, FDC.* (2)  
 \$1,000



1477\*  
**Elizabeth II**, Perth Mint proof set, 1962. *Halfpenny with slight toning, otherwise full red FDC.* (2)  
 \$900

1478  
**Elizabeth II**, Melbourne Mint proof set, 1963. *FDC.* (4)  
 \$300

Ex The Oscar J.Pearl Collection, Bowers and Ruddy Galleries, June 28-30, 1979, lot 3185, with their ticket.

1479  
**Elizabeth II**, Melbourne Mint proof set, 1963. *FDC.* (4)  
 \$300  
 Private purchase from M.R.Roberts in 1993.

1480  
**Elizabeth II**, Melbourne Mint proof set, 1963. *With black plastic case of issue, FDC.* (4)  
 \$300

1481  
**Elizabeth II**, Melbourne Mint proof set, 1963. *FDC.* (4)  
 \$300

1482  
**Elizabeth II**, Melbourne Mint proof set, 1963. *Peripheral toning, otherwise FDC.* (4)  
 \$300

1483  
**Elizabeth II**, Melbourne and Perth proof sets, 1963. *The silver with black plastic case of issue, nearly FDC.* (6)  
 \$800



1484\*  
**Elizabeth II**, Perth Mint proof set, 1963. *A few tiny spots on obverse of penny, otherwise full mint red FDC.* (2)  
 \$1,000



1485\*  
**Elizabeth II**, Perth Mint proof set, 1963. *Full mint red, FDC.* (2)  
 \$750

1486  
**Elizabeth II**, Perth Mint proof set, 1963. *Nearly FDC.* (2)  
 \$450

1487  
**Elizabeth II**, Perth Mint proof set, 1963. *Halfpenny dark toned, nearly FDC.* (2)  
 \$400

Each in a slab by PCGS as PR64RB and PR62RB.

1488  
**Elizabeth II**, Perth Mint proof penny, 1963. *FDC.*  
 \$600





1489\*  
**Elizabeth II**, Perth Mint proof halfpenny, 1963. *Spot on Queen's neck, otherwise FDC.*  
 \$200



1490\*  
**Elizabeth II**, unofficial swan pattern dollar, 1967, in **gold** (22ct, 40.3g, 38mm) plain edge by Andor Meszaros for John Pinches. *Some edge knocks, contact marks and hairline scratches in fields, otherwise good extremely fine.*  
 \$8,000



1491\*  
**Elizabeth II**, unofficial pattern silver swan dollar, 1967, by Andor Meszaros for John Pinches, milled edge. *In 'Pattern Crown' case of issue, toned FDC.*  
 \$1,250  
 Ex M.Ward Collection.



1492\*  
**Elizabeth II**, unofficial pattern swan dollar, 1967, in silver, plain edge proof by Andor Meszaros for John Pinches. *Hairlines and miniscule edge nick at 4 o'clock, otherwise FDC.*  
 \$850

## AUSTRALIAN COMMONWEALTH COINS

1493  
**George VI**, year set, 1938, florin, shilling, sixpence, threepence, penny and halfpenny. *Good extremely fine - uncirculated.* (6)  
 \$200

## CROWNS



1494\*  
**George VI**, 1937. *Contact marks on obverse, otherwise nearly uncirculated/uncirculated.*  
 \$200



1495\*  
**George VI**, 1937. *Contact marks on obverse, otherwise nearly uncirculated.*  
 \$180



1496\*  
**George VI**, 1937. *Obverse with contact marks, otherwise uncirculated.*  
 \$100





1497\*  
**George VI, 1938.** *Underlying mint bloom, nearly uncirculated.*

\$240



1498\*  
**George VI, 1938.** *Obverse with contact marks, otherwise extremely fine.*

\$180



1501\*  
**George V, 1911.** *Lightly toned, well struck, uncirculated.*

\$5,000

**FLORINS**



1499\*  
**Edward VII, 1910.** *Nearly uncirculated/uncirculated.*

\$2,000



1502\*  
**George V, 1911.** *Frosty bloom, golden peripheral tone, light contact marks, uncirculated.*

\$3,000



1503\*  
**George V, 1912.** *Nearly extremely fine and rare in this condition.*

\$750

1500\*  
**Edward VII, 1910.** *Extremely fine.*

\$750



1504\*  
**George V, 1913.** *Nearly extremely fine/good extremely fine.*

\$1,250



1505\*  
**George V, 1914.** *Toned, nearly uncirculated.*

\$750



1506\*  
**George V, 1914H.** *Good very fine.*

\$750



1507\*  
**George V, 1914H.** *Surface marks, otherwise toned, good very fine and rare in this condition.*

\$600



1508\*  
**George V, 1915.** *Good very fine/extremely fine.*

\$1,250

**Outstanding Florin 1915H**



1509\*  
**George V, 1915H.** *Well struck attractive golden and blue grey toning, contact marks in right obverse field, otherwise relatively unmarked and choice uncirculated, very rare in this condition.*

\$9,000



1510\*  
**George V, 1915H.** *Soft strike, good extremely fine.*

\$1,500





1511\*  
**George V, 1916M.** *Full mint bloom, tiny contact mark on cheek, faintest brush lines in front of portrait, otherwise choice uncirculated.*

\$2,500



1516\*  
**George V, 1919M.** *Choice uncirculated.*

\$3,000



1512\*  
**George V, 1916M.** *Toned, nearly uncirculated.*

\$600



1517\*  
**George V, 1919M.** *Uncirculated/choice uncirculated.*

\$2,500



1513\*  
**George V, 1917M.** *Dark tone, good strike, uncirculated.*

\$1,000



1518\*  
**George V, 1919M.** *Contact marks on obverse, otherwise nearly uncirculated/uncirculated with attractive blue grey patina on the reverse, rare in this condition.*

\$2,500



1514\*  
**George V, 1918M.** *Toned, light scratch behind crown, uncirculated.*

\$750



1519\*  
**George V, 1921.** *Original mint bloom, mark on King's neck, choice uncirculated.*

\$3,000



1515\*  
**George V, 1919M.** *Attractive gold and red tone, scuff marks in left obverse field, otherwise uncirculated/choice uncirculated.*

\$4,500



1520\*  
**George V, 1921.** *Lustrous, uncirculated.*

\$2,250

In a slab by PCGS as MS61.





1521\*  
**George V**, 1922. *Contact marks, die break on reverse, good very fine/nearly extremely fine.*  
 \$500



1526\*  
**George V**, 1925. *Satin mint bloom, choice uncirculated.*  
 \$1,500



1522\*  
**George V**, 1923. *Golden tone, choice uncirculated.*  
 \$3,250

**Near Gem Florin 1926**



1523\*  
**George V**, 1923. *Choice uncirculated.*  
 \$3,000



1524\*  
**George V**, 1924. *Choice uncirculated.*  
 \$2,500



1525\*  
**George V**, 1924. *Seriffed 4, die break through date, lightly toned matte fields, well struck, nearly uncirculated.*  
 \$1,500



1527\*  
**George V**, 1926. *Well struck with full original mint bloom, one angular scratch under emu takes this away from gem uncirculated, rare in this condition.*  
 \$4,000



1528\*  
**George V, 1926.** *Considerable original mint bloom, golden brown toning in parts, nearly uncirculated and rare in this condition.*

\$1,100



1533\*  
**George V, 1932.** *Nearly extremely fine/good extremely fine.*

\$3,500



1529\*  
**George V, 1927 Canberra.** *Obverse iridescent tone, choice uncirculated with three clear steps.*

\$400

In a slab by PCGS as MS65.



1534\*  
**George V, 1932.** *Good very fine and rare in this condition.*

\$900



1530\*  
**George V, 1928.** *Peripheral die breaks obverse and reverse, spotting on reverse, uncirculated.*

\$1,000



1535\*  
**George V, 1933.** *Obverse unevenly toned, good extremely fine.*

\$1,250



1531\*  
**George V, 1931.** *Full mint bloom, light tone, choice uncirculated.*

\$450

In a slab by PCGS as MS64.



1536\*  
**George V, 1933.** *Extremely fine/good extremely fine.*

\$1,000



1532\*  
**George V, 1931.** *Uncirculated.*

\$350



1537\*  
**George V, 1934.** *Slight brushing on field under and in front of portrait, otherwise choice uncirculated.*

\$1,800

In a slab by PCGS as MS63.





1538\*  
**George V**, 1934. *Some brilliance, nearly uncirculated/uncirculated.*

\$400



1543\*  
**George V**, 1934-35 Melbourne Centenary. *Full original mint bloom, minor contact mark on horse's neck, otherwise choice uncirculated.*

\$800



1539\*  
**George V**, 1934-35 Melbourne Centenary. *Full original mint bloom, some obverse toning, choice uncirculated.*

\$1,000



1544\*  
**George V**, 1934-35 Melbourne Centenary. *Nearly full original mint bloom, uncirculated.*

\$750

In a slab by PCGS as MS64.



1540\*  
**George V**, 1934-35 Melbourne Centenary. *Full original mint bloom, gem uncirculated.*

\$1,000



1545\*  
**George V**, 1935. *Toned, uncirculated.*

\$1,000



1541\*  
**George V**, 1934-35 Melbourne Centenary. *Well struck up wreath, slight toning on full original mint bloom, choice uncirculated.*

\$1,000



1546\*  
**George V**, 1936. *Uncirculated.*

\$350



1542\*  
**George V**, 1934-35 Melbourne Centenary. *Full original mint bloom, gem uncirculated.*

\$1,000



1547\*  
**George V**, 1936. *Uncirculated.*

\$350



**SHILLINGS**



1548\*  
George VI, 1938. *Uncirculated.*

\$150



1555\*  
Edward VII, 1910. *Toned, nearly uncirculated.*

\$250



1549\*  
George VI, 1939. *Weak strike on crown, uncirculated.*

\$1,250



1556\*  
Edward VII, 1910. *Nearly uncirculated.*

\$200

Ex M.Ward Collection.

1550  
George VI, 1940 and 1941, 1942S, 1943S, and 1944S. *Contact marks on high points of the last, bright full mint bloom, generally a white silver frosty mint bloom, choice uncirculated. (5)*

\$400

In slabs by PCGS as MS63-MS65.

1551  
George VI, 1942, 1943, 1944 and 1945. *The last with golden tone, the others light brown tone, all untouched, choice uncirculated. (4)*

\$500

In slabs by PCGS MS64 for first three, last MS62.

1552  
George VI, 1946, 1947, 1951 and 1952. *Minor surface contact marks, the 1951 toned original untouched, the 1952 bright silver and well struck, uncirculated-choice uncirculated. (4)*

\$300

In slabs by PCGS as MS64, MS63, MS63 and MS63.

1553  
George VI, 1951 Jubilee; Elizabeth II, 1954 Royal Visit. *Choice uncirculated, the first toned. (2)*

\$100

In slabs by PCGS as MS64 and MS63.

1554  
Elizabeth II, 1953-1963. *Choice uncirculated. (10)*

\$250

In slabs by PCGS as MS64 except for the 1954 as MS63.



1557\*  
George V, 1911. *Well struck, choice uncirculated and rare in this condition.*

\$2,300

Ex John Wilson Collection (lot 2093, Noble Numismatics Sale 87B).



1558\*  
**George V, 1911.** *Mint bloom, uncirculated.*

\$1,250



1559\*  
**George V, 1912.** *Attractively toned, light frictional wear, otherwise nearly uncirculated and rare in this condition.*

\$3,000



1560\*  
**George V, 1912.** *Toned, reverse with friction marks on feathers, good extremely fine/nearly uncirculated.*

\$1,500



1561\*  
**George V, 1914.** *Lightly toned, underlying mint bloom, nearly uncirculated.*

\$750

In a slab by PCGS as MS63.



1562\*  
**George V, 1915.** *Hairline on right obverse field, cleaned, otherwise good extremely fine.*

\$700

**Very Rare Uncirculated Shilling 1915H**



1563\*  
**George V, 1915H.** *Nearly full mint bloom, uncirculated and very rare in this condition, one of the finest known.*

\$15,000



1564\*  
**George V, 1916M.** *Toned, uncirculated.*

\$350



1565\*  
**George V, 1917M.** *Contact marks, uncirculated.*

\$400



1566\*  
George V, 1918M. *Uncirculated.*

\$600



1567\*  
George V, 1920M. *Good extremely fine/uncirculated.*

\$1,250



1568\*  
George V, 1920M. *Nearly uncirculated.*

\$850



1569\*  
George V, 1921 star. *Dirt adhesion on lower right reverse, subdued original mint bloom, nearly uncirculated and rare in this condition.*

\$2,500



1570\*  
George V, 1922. *Attractive tone, nearly uncirculated.*

\$500



1571\*  
George V, 1922. *Nearly uncirculated.*

\$400

**Choice Shilling 1924**



1572\*  
George V, 1924. *Deep blue grey tone, strong strike showing re-entered and overdated 4, minor hairline contact marks take this away from being a gem, attractive, uncirculated and rare in this state.*

\$4,000



1573\*  
George V, 1925. *Full original cartwheeling mint bloom, uncirculated.*

\$500



1574\*  
George V, 1925. *Nearly uncirculated/uncirculated.*

\$450





1575\*  
George V, 1931. Toned, nearly uncirculated.

\$250



1578\*  
George V, 1936. Toned, uncirculated.

\$400

**Key Date Shilling 1933**



1576\*  
George V, 1933. Uncirculated and rare in this condition.

\$5,500



1577\*  
George V, 1935. Uncirculated.

\$400



1579\*  
George VI, 1938. Uncirculated.

\$100



1580\*  
George VI, 1939. Original mint bloom, uncirculated.

\$250



1581\*  
George VI, 1939. Uncirculated.

\$250



1582\*  
George VI, 1940. Lightly toned, uncirculated and scarce in this condition.

\$350

In a slab by PCGS as MS63.



1583\*  
**George VI, 1942. Uncirculated.**

\$200

1584  
**George VI, 1944S. One heavily toned, choice uncirculated.**  
 (3)

\$120



1585\*  
**George VI, 1946 Perth. Nearly uncirculated/uncirculated.**

\$100

Ex M. Ward Collection.



1589\*  
**George V, 1918M. Nearly uncirculated and rare in this condition.**

\$3,000



**SIXPENCES**

1586  
**Edward VII, 1910. Nearly uncirculated.**

\$150

In a slab by ANACS as AU58.



1590\*  
**George V, 1919M. Slight hairlines, dipped, otherwise nearly uncirculated.**

\$1,000



1587\*  
**George V, 1911. Subdued frosty mint bloom under dusty tone, uncirculated and rare in this condition.**

\$1,600

In a slab by PCGS as MS63.



1591\*  
**George V, 1920M. Peripheral tone, well struck, uncirculated and rare in this condition.**

\$3,000



1588\*  
**George V, 1911. Hairline on left obverse field, otherwise uncirculated.**

\$750



1592\*  
**George V, 1921. Toned, obverse field with scratch, uncirculated/nearly uncirculated.**

\$200





1593\*  
**George V**, 1923. *Toned, nearly uncirculated/uncirculated.*  
 \$450



1594\*  
**George V**, 1925. *Toned, nearly uncirculated.*  
 \$250



1595\*  
**George V**, 1926. *Extremely fine/good extremely fine.*  
 \$200

1596  
**George V**, 1928. *Scratch on obverse through King's shoulder and face, nearly uncirculated.*  
 \$170



1597\*  
**Elizabeth II**, 1953. *Frosty mint bloom on reverse, uncirculated.*  
 \$140

**THREEPENCES**



1598\*  
**Edward VII**, 1910. *Choice, uncirculated.*  
 \$150



1599\*  
**Edward VII**, 1910. *Toned, uncirculated.*  
 \$100



1600\*  
**George V**, 1911. *Full original mint bloom, uncirculated/choice uncirculated.*  
 \$350



1601\*  
**George V**, 1911. *Uncirculated/choice uncirculated, rim bruise and die break at 5 o'clock.*  
 \$750



1602\*  
**George V**, 1912. *Toned, nearly uncirculated and rare.*  
 \$400



1603\*  
**George V**, 1914. *Subdued mint bloom, nearly uncirculated and rare.*  
 \$1,000



1604\*  
**George V**, 1915. *Extremely fine/nearly uncirculated and rare.*  
 \$1,250



1605\*  
**George V**, 1916M. *Brushed of spots, nearly uncirculated.*  
 \$500



1606\*  
**George V**, 1917M. *Nearly uncirculated/uncirculated.*  
 \$350



1607\*  
**George V, 1918M. Nearly uncirculated/uncirculated.**  
 \$300



1608\*  
**George V, 1919M. Toned, reverse with die break below scroll, nearly uncirculated.**  
 \$300



1609\*  
**George V, 1920M. Two rim to Arms die breaks on reverse at 4 and 8 o'clock, blue toned, uncirculated/choice uncirculated and rare in this condition.**  
 \$3,000

Ex IAG Sale 67 (March 2008, lot 378).



1610\*  
**George V, 1921M. Uncirculated.**  
 \$250



1611\*  
**George V, 1921. Uncirculated.**  
 \$1,250



1612\*  
**George V, 1922/1 overdate. Slight rim damage in two places, otherwise good and very rare.**  
 \$3,000



1613\*  
**George V, 1922. Extremely fine.**  
 \$200



1614\*  
**George V, 1924. Uncirculated.**  
 \$850



1615\*  
**George V, 1925. Uncirculated.**  
 \$400

1616  
**George V, 1926. Toned, uncirculated.**  
 \$120



1617\*  
**George V, 1927. Uncirculated.**  
 \$200



1618\*  
**George VI, 1942. Extremely fine/good extremely fine.**  
 \$500



PENNIES

An Important Collection Formed between 1960 and 1985 by a NSW Collector



1619\*  
George V, 1911. Nearly full subdued original mint red, uncirculated.

\$350



1623\*  
George V, 1914. Cleaned of patina, raw red metal colour, good extremely fine.

\$200



1620\*  
George V, 1911. Red and brown uncirculated with some carbon spotting.

\$250



1624\*  
George V, 1915. Cleaned of patina, glossy raw red metal colour, good extremely fine, reverse rim nick at 8.30 o'clock.

\$200



1621\*  
George V, 1912H. Cleaned of patina, glossy raw red metal colour, unmarked good extremely fine.

\$100



1625\*  
George V, 1915H. Full subdued original mint red, choice uncirculated and rare in this condition, one of the finest known.

\$1,500



1622\*  
George V, 1913. Subdued original red and light brown, uncirculated.

\$500



1626\*  
George V, 1916I. Cleaned, dull re-toning, reverse mark on inner circle and 6 of date, nearly uncirculated.

\$100

**Specimen Strike 1920 Plain Penny**



1627\*  
**George V**, 1917I. *Full original mint red, choice uncirculated, one of the finest known.*

\$900



1628\*  
**George V**, 1918I. *Red and brown, choice uncirculated and rare in this condition.*

\$1,500



1629\*  
**George V**, 1919. *Subdued re-toning, choice uncirculated.*

\$300



1632\*  
**George V**, Melbourne Mint specimen penny, 1920 plain, Indian die. *Proof-like reverse, cleaned of toning, red and brown, nearly FDC and excessively rare in this state.*

\$8,000

Ex A.M.Le Souef and S.V.Hagley Collections and Spink Australia Sale 1, 27 October 1977 (lot 661).



1630\*  
**George V**, 1919 dot below scroll. *Full red, choice uncirculated.*

\$450



1633\*  
**George V**, 1920 small dot below bottom scroll, Indian die. *Attractive lilac and red concave reverse with peripheral die breaks, uncirculated.*

\$600

1631  
**George V**, 1919 small dot below and die clash flaw above top scroll. *Cleaned of patina, good extremely fine.*

\$70





1634\*  
**George V**, 1920 dot above top scroll and dot below bottom scroll, Indian die. *Mostly red uncirculated and very rare, one of the finest known.*

\$900



1638\*  
**George V**, 1923, London die. *Cleaned of toning, brilliant red reverse, obverse peripheral die break, uncirculated.*

\$450



1635\*  
**George V**, 1920 dot above bottom scroll, Indian die. *Cleaned of patina, raw red metal colour, good extremely fine.*

\$250



1639\*  
**George V**, 1924, London die. *Subdued full original mint red, peripheral die breaks both sides, reverse die clash noticeable, choice uncirculated.*

\$750



1636\*  
**George V**, 1921, Indian die. *Double entered obverse legend, attractive iridescent tone, uncirculated and rare in this condition, one of the finest known.*

\$900



1640\*  
**George V**, 1925, London die. *Plain die state with vertical flaw on cheek, cleaned of patina subdued raw red metal colour, good extremely fine and rare in this state.*

\$2,500



1637\*  
**George V**, 1922, London die. *Cleaned, glossy purple brown, good extremely fine.*

\$250



1641\*  
**George V**, 1926 London die. *Peripheral die breaks on both sides, nearly full mint red, uncirculated/choice uncirculated and rare in this condition, one of the finest known.*

\$1,500

**Outstanding High Grade Penny 1930**



1642\*  
**George V**, 1927, London die. *Brown and crimson red, uncirculated.*

\$300



1643\*  
**George V**, 1928, London die. *Peripheral obverse die breaks, subdued full mint red, choice uncirculated and rare in this condition.*

\$600



1644\*  
**George V**, 1929, London die. *Obverse peripheral die breaks, minor rim bruise, cleaned of patina, raw red metal colour, good extremely fine and rare.*

\$150



1646\*  
**George V**, 1930, Indian die. *Obverse rim bruises at 9.30 and 3 o'clock, cleaned of patina, orange red metal colour with toned high points, full centre diamond and eight clear pearls, nearly extremely fine/extremely fine and extremely rare in this condition, the third finest currency coin we have handled and as such of great importance.*

\$30,000

Ex Spink Australia Sale 12, 4 April 1984 (lot 772) when it was bought for an important collection in Perth which was later sold en bloc in Sale 26 (lot 905) to Richard Williams (whose collection was sold in Sale 35) but with the exception of this 1930 penny.



1645\*  
**George V**, 1929, Indian die. *Cleaned of patina, raw red metal colour with some re-toning, good extremely fine.*

\$200





1647\*  
**George V**, 1931 dropped 1, Indian die. *Rim bruise, brown patina, good fine and very rare.*

\$2,000



1648\*  
**George V**, 1931, London die. *Cleaned of patina, raw red metal colour, toning on high points, good extremely fine.*

\$150



1649\*  
**George V**, 1932. *Subdued mint bloom, brown and red uncirculated.*

\$200



1650\*  
**George V**, 1933/2 overdate. *Full mint red, choice uncirculated and rare, one of the finest known.*

\$3,000



1651\*  
**George V**, 1933. *Dull cleaned mint red, uncirculated.*

\$100



1652\*  
**George V**, 1934. *Attractive red and crimson tone, choice uncirculated.*

\$350



1653\*  
**George V**, 1935. *Dull toned mint red, uncirculated.*

\$150

1654  
**George V**, 1936. *Cleaned of patina, polished red, two rim nicks, good extremely fine.*

\$70





part

1655\*  
**George VI**, 1938, 1939 and 1940. *Attractively toned, mostly mint red, uncirculated, the second choice.*

\$300

1656  
**George VI**, 1940 K dot G, 1941, 1941 Y dot, 1941 K dot G. *Usual poor strikes and three streaky mint red, nearly uncirculated.* (4)

\$400

1657  
**George VI**, 1942 Y dot, 1942I, 1943, 1943 Y dot, 1943I, 1944, 1944 Y, 1945 Y. *Toned, nearly uncirculated - uncirculated.* (8)

\$200



1658\*  
**George VI**, 1946. *Streaky tone, full mint red, uncirculated and rare in this condition.*

\$750

1659  
**George VI**, 1947, 1947Y., 1948, 1948Y., 1949, 1950 (2), 1950Y, 1951, 1951Y., 1951PL, 1952, 1952Y.; **Elizabeth II**, 1953, 1953A., 1964. *Nearly extremely fine - uncirculated.* (16)

\$250

1660  
**Elizabeth II**, proof, Melbourne Mint, 1955, 1958; Perth Mint 1962. *Second toned, others cleaned, good extremely fine.* (3)

\$150



1661\*  
**Elizabeth II**, Perth Mint proof, 1955. *Brilliant red, FDC and rare.*

\$5,000



1662\*  
**Elizabeth II**, Perth Mint proof, 1956. *Full red, FDC and rare.*

\$5,000



1663\*  
**Elizabeth II**, Melbourne Mint proof, 1956. *Brilliant, tiny carbon spots on obverse, otherwise FDC.*

\$400

1664  
**Elizabeth II**, Perth Mint, matte finish proof 1957. *Carbon spotting and toning, otherwise FDC.*

\$300



1665\*  
**Elizabeth II**, Perth Mint proof, 1958. *Gem, FDC.*

\$800



1666\*  
**Elizabeth II**, Perth Mint proof, 1959. *Full red, FDC.*

\$750

1667  
**Elizabeth II**, Melbourne Mint proof, 1959. *Obverse toned, nearly FDC.*

\$200



1668\*  
**Elizabeth II**, Perth Mint proof, 1960. *FDC.*

\$400

1669  
**Elizabeth II**, Perth Mint proof, 1961. *Some toning, nearly FDC.*

\$200



1670\*  
**Elizabeth II**, Perth Mint proof 1963. *Full red, FDC.*

\$600

**OTHER PROPERTIES**



1673\*  
**George V**, 1914. *Red and brown, uncirculated and rare in this condition.*

\$1,500

In a slab by PCGS as MS63RB.



1674\*  
**George V**, 1914. *Well struck for this date, brown with traces of red on reverse, nearly uncirculated and rare in this condition.*

\$400

1675  
**George V**, 1917I. *Mostly mint red with some dark toned areas, uncirculated.*

\$300



1671\*  
**George V**, penny, 1911. *Full original mint red, choice uncirculated.*

\$750



1676\*  
**George V**, 1922, London die. *Brown and red, uncirculated.*

\$700



1672\*  
**George V**, 1911. *Full mint red, lightly toned, choice uncirculated.*

\$500

In a slab by PCGS as MS64RB.



1677\*  
**George V**, 1923 London die. *Well struck bluish brown with traces of red, reverse underlying brilliance, uncirculated.*

\$200



**Choice Penny 1925**



1680\*

**George V**, 1925. *Flaw under O to simulate a Q die state, reverse rim nick at 8 o'clock, otherwise attractively re-toned, extremely fine and rare in this state.*

\$350

**High Grade Penny 1930**



1678\*

**George V**, 1925 London die. *Die state with flaw under O in Commonwealth to simulate Q, some spotting on reverse, well struck with glossy blue brown patina, good extremely fine or nearly uncirculated and rare in this condition, one of the finest known.*

\$8,000

In a slab by PCGS as MS62BN.



1679\*

**George V**, 1925, London die. *Flaw to simulate Q die state, good very fine.*

\$500

In a slab by PCGS as XF45.

1681\*

**George V**, 1930, Indian die. *Nearly full centre diamond, six clear pearls, uneven tone, good very fine and rare, especially in this condition.*

\$18,000

Private purchase from M.R.Roberts in 1989.





1684\*

**George V**, 1930, Indian die. *Reverse rim knock at 4 o'clock, minor rim knocks elsewhere, medium brown patina, good fine and rare.*

\$14,000

1685

**George V**, 1931, dropped 1, London die. *Cleaned, red and crimson, good extremely fine.*

\$250



1686

**George V**, 1932 and 1933. *Good extremely fine; nearly uncirculated. (2)*

\$100

1687

**George VI**, 1938, 1945Y., 1949, 1952. *Uncirculated - choice uncirculated. (4)*

\$150

In slabs by PCGS as MS64RB, MS62BN, MS64RD, MS64RD.



1682

**George V**, 1930, Indian die. *Rim nick at 2 o'clock on reverse, good fine/nearly very fine and rare.*

\$17,000

1688\*

**George VI**, 1940. *Full red, obverse rim flaw at 3 o'clock, uncirculated.*

\$120

Sold with a copy of a Royal Australian Mint letter of authenticity in 1976.

1689

**George VI**, 1941, 1942Y., 1943 and 1943Y. *Uncirculated. (4)*

\$150



1683\*

**George V**, 1930, Indian die. *Six clear pearls, even brown patina, good fine and rare.*

\$14,000

1690\*

**George VI**, 1946. *Streaky carbon flecks, full original mint red, choice uncirculated and rare in this condition.*

\$2,000

1691

**George VI**, 1948Y., Perth. *Brown and red, nearly uncirculated and rare.*

\$350



1692

**George VI**, 1948-1952 Melbourne. *Uncirculated.* (5)

\$100

**HALFPENNIES**



1693\*

**George V**, 1911. *Nearly full mint red, some spotting, otherwise uncirculated.*

\$250



1694\*

**George V**, 1917I. *Mostly mint red, extremely fine.*

\$150



1697\*

**George V**, 1923. *Diagnostic peripheral die breaks either side, even brown patina, nearly extremely fine and rare, one of the finest known.*

\$9,000



1695\*

**George V**, 1918I. *Peripheral die break on the obverse, blue brown toned with traces of red, nearly uncirculated and rare.*

\$750



1698\*

**George V**, 1923. *Diagnostic peripheral die breaks either side, even brown patina, good very fine and rare, especially in this condition.*

\$5,000

In a slab by PCGS as XF45.

1696

**George V**, 1920, 1922. *The first brown and red, nearly uncirculated; the second attractive glossy brown with traces of red, uncirculated.* (2)

\$170





1699\*  
**George V**, 1923. *Peripheral die breaks both sides, medium brown patina, good very fine and rare in this condition.*  
 \$2,000



1705\*  
**George V**, 1931. *Dull red brown re-toning, good extremely fine.*  
 \$100



1706  
**George V**, 1933, 1935, 1936. *Last coin with die breaks on reverse, nearly uncirculated - uncirculated. (3)*  
 \$200

1700\*  
**George V**, 1923. *Diagnostic peripheral die breaks both sides, brown patina, good very fine and rare in this condition.*  
 \$2,000



1707\*  
**George V**, 1935. *Cleaned but sharply struck, nearly uncirculated.*  
 \$200



1701\*  
**George V**, 1923. *Peripheral die break on obverse and reverse, edge knock on obverse at 2 o'clock, reverse with edge knock at 2-3 o'clock, good very fine.*  
 \$1,650



1708\*  
**George VI**, 1939 kangaroo reverse. *Red and brown, uncirculated and rare in this condition.*  
 \$1,600

1702  
**George V**, 1925. *Spotted medium brown with some carbon lamination areas, good extremely fine and rare in this condition.*  
 \$120

1703  
**George V**, 1927. *Glossy brown with traces of mint red, uncirculated.*  
 \$50

In a slab by PCGS as MS64RB.



1704  
**George V - George VI**, 1929, 1942. *Brown and red, nearly uncirculated. (2)*  
 \$150