

MISCELLANEOUS



1709*
Great Britain, Queen Victoria, Jubilee coinage, crown, 1887 (S.3921) with enameled reverse and brooch pin fitting to obverse. *Very fine.*

\$100

Enameled in the style of Birmingham jeweller, Edwin Steel.

1710
Great Britain, Queen Victoria, halfcrown coin brooches, 1887, enamelled in five colours; 1893, voided in the devices and gilt. *Fine.* (2)

\$70



1711*
Great Britain, Queen Victoria, Jubilee coinage, sovereign, 1890 in a decorative gold frame (18ct; 5.62g) set with eighteen small diamonds. *Nearly uncirculated.*

\$600

1712
Great Britain, Queen Victoria Golden Jubilee silver necklace, comprising sixteen Great Britain Jubilee head Queen Victoria sixpences dated 1887, all with loop mounts fitted and attached to a graduating link silver fob chain (86g; 46cm). *Very fine.*

\$100

1713
Australia, Queen Victoria, Jubilee head sovereign, 1889M Melbourne, jeweller's copy. *Uncirculated.*

\$270

1714
Australia, Edward VII, sovereign, 1906 Sydney with 14ct gold scroll suspension (1.6g), with attached safety chain. *In jewellery case, fine.*

\$330

1715
Australia, Elizabeth II, mint gold two hundred dollars, 1989 Frilled Neck Lizard set into an ornate 9ct gold frame with attached 9ct gold chain (coin 22ct, 10g; frame and chain 9ct, 8.8g). *In Royal Australian Mint jewellery presentation case, extremely fine.*

\$480

1716
Australia, Elizabeth II, mint gold two hundred dollars, 1990 Platypus set into an ornate 9ct gold frame with attached 9ct gold chain (coin 22ct, 10g; frame and chain 9ct, 8.8g). *In Royal Australian Mint jewellery presentation case, extremely fine.*

\$480

1717
Canada, Elizabeth II, fine gold half ounce Maple Leaf, 1986, claw set in 18ct gold pendant frame (coin 15.55g, frame 1.65g). *Some obverse scuffing from wearing, otherwise extremely fine.*

\$650

1718
Canada, Elizabeth II, fine gold half ounce Maple Leaf, 1986, claw set in 18ct gold pendant frame (coin 15.55g, frame 1.65g). *Some obverse scuffing from wearing, otherwise extremely fine.*

\$650

1719
Canada, Elizabeth II, fine gold half ounce Maple Leaf, 1986, claw set in 18ct gold pendant frame (coin 15.55g, frame 1.65g). *Some obverse scuffing from wearing, otherwise extremely fine.*

\$650



1720*
India, Narandas Motilal, Bombay 100, one tola gold ingot number 10082 (11.6g). *Extremely fine.*

\$500

1721
Coin drawers, set of six stackable, clear acrylic drawers with velvet red trays for florins (3), shillings (2) and sixpence; Official 2008 NRL Collector Cards set of 240 in official album; naval book series by Antony Preston, includes Submarines, Strike Craft, Destroyers, Cruisers, Aircraft Carriers, also Exploring The Bismarck by Robert D. Ballard. *Very fine - uncirculated.* (lot)

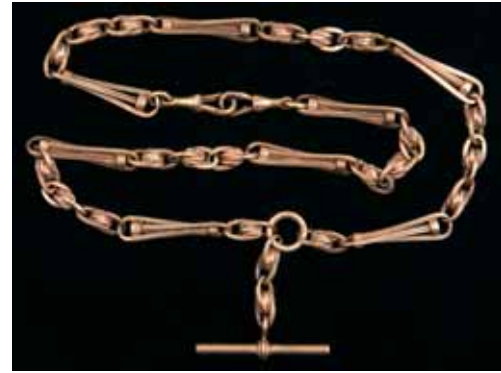
\$50



1722*

Germany, 18ct gold brooch (7.1g; 28mm), features a bust of the goddess for Autumn facing left wearing a necklace of four genuine, old-cut diamonds, at the top left edge 'AUTOMNE'. *Very fine.*

\$300



1726*

Antique gold fob chain, in 9ct (53.2g), unusual decorative links. *Very fine.*

\$900



1723*

Gold mining brooch, in gold (15ct, 3gm), measures 45x20mm, steel pin-back. *Missing lettering, fine.*

\$150



1727*

Antique gold fob chain, in 9ct (39.3g), very decorative link and bar design. *Good very fine.*

\$650



1724*

Antique gold bracelet, in 14ct (48.8g), mesh band with decorative tassled slider and a tiered centrepiece decorated with engraved details coloured black and on top a row of five small pearls. *Extremely fine.*

\$1,200

1728

Matching ladies jewellery, in 18 carat gold, necklace (36g) set with rubies (47), bracelet set with rubies (8) and ring with rubies (8) (gross weight 76g). In Tahan (jewellers) case from Tripoli in Lebanon. *Very fine.*

\$1,800



1729

Antique gold pin, shield shape in 9ct (1.9g) with leaf engraved decoration and the name, 'Will'; antique sterling silver small propelling pencil decorated with a yellow stone at the end and with suspension loop at side. *Very fine.* (2)

\$80

1725*

Gold necklace, oval belcher type in 18ct gold (17.2g; 59cm). *Extremely fine.*

\$700

1730

Gold bracelet, solid 18ct yellow gold (15.95g) engine turned design. *Extremely fine.*

\$400

Ex Robert Rossini Collection.

1731

Money bag pendant, in 9ct yellow gold (11.2g), measures 25x35mm. *Very fine.*

\$150

Ex Robert Rossini Collection.



1732*

Earrings, set in 18ct yellow gold (total weight 11.1g) with central panel of Burmese jade, each surrounded by twenty six diamonds (approx total .76ct), pin back. *Extremely fine.*

\$450

Ex Robert Rossini Collection.

1733

Earrings, a pair of Tagliamonte (Vincenza, Italy) in 14ct yellow gold and sterling (.925) silver, classic Greek/Roman design, total weight 14.8g, for pierced ears. *Very fine.*

\$150

Ex Robert Rossini Collection.



1734*

Earrings, pendant style, black cultured (Tahitian) pearls set in 18ct white gold (total weight 8.2gms), set with three rows of small diamonds. *Extremely fine.*

\$220

Ex Robert Rossini Collection.

1735

Drop earrings, leaf design in 14ct rose and yellow gold (6.2g). *Very fine.*

\$150

Ex Robert Rossini Collection.

1736

Pearl drop earrings, fine South Seas semi-Baroque, semi-black pearls, in 18ct yellow gold wire setting (total weight 7.6g). *Extremely fine.*

\$150

Ex Robert Rossini Collection.

1737

Gold ring, semi-Baroque South Sea semi-black pearl, set in 18ct yellow gold (total weight 9.2g). *Very fine.*

\$270

Ex Robert Rossini Collection.

1738

Black pearl pendant, Baroque cultured black pearl set in 18ct white gold (total weight 2.7g), with seven diamonds set in top loop suspension. *Extremely fine.*

\$130

Ex Robert Rossini Collection.

1739

Mabe pearl pendant, set in 18ct yellow gold (total weight 4.8g), 21mm diameter. *Extremely fine.*

\$180

Ex Robert Rossini Collection.

1740

Sapphire pendant, fine Cashmerian blue sapphire of approx 1.8ct, set in a 9ct gold mount (total weight 1.5g), 10mm diameter, surrounded by white stones. *Very fine.*

\$150

Ex Robert Rossini Collection.



1741*

Diamond ring, eternity ring of ten old cut diamonds, approx .64ct, set in 18ct yellow gold (4.3g), finger size O. *Very fine.*

\$750

Ex Robert Rossini Collection.

1742

Gemstones, a small collection, blue sapphire (1.77ct); natural Brazilian zircons (heat treated, 20.38ct); natural ruby (9.64ct) and four others. *Average used - unused.* (58)

\$100

Ex Robert Rossini Collection.



1743*

Fountain pen, Montegrappa (1912), Italian c1950s, faux mother of pearl body with silver fittings, screw cap, platinum nib. *Minor abrasions on body, otherwise good condition.*

\$150

Ex Robert Rossini Collection.



1744*

Gent's wristwatch, antique Doxa Regulateur two register chronograph, c1910, signed nickel case, backplate, movement and dial, case measures 55mm (without crown), white pocolain dial, with crack at top and repaired chip at bottom, manual wind, luminous number batons and steel hands, black leather bracelet, in working order but not tested for accuracy. *Fine.*

\$300

Ex Robert Rossini Collection.

1745

Gent's wristwatch, vintage Phenix Compensamatic, c1948, stainless steel case (35mm including crown) sweep seconds hand, engine turned silver dial, stainless steel batons, leather bracelet, in working condition but not tested for accuracy. *Excellent condition.*

\$150

A little known brand with lots of history. Ex Robert Rossini Collection.



1746*

Lady's wristwatch, Rolex precision, c1958, manual wind, in gold (10ct), cream dial (21mm) with subsidiary seconds hand, brown leather bracelet, has been serviced but cannot be guaranteed. *In a red Rolex box, very fine.*

\$250

Ex Robert Rossini Collection.



1747*

Lady's wristwatch, vintage Omega Constellation, c1970 in gold (18ct yellow), automatic chronometer, sweep seconds hand, date window at 3 o'clock, original gold Omega crown, case measures 25mm diameter (without crown), non Omega brown leather bracelet, has been serviced but cannot be guaranteed for accuracy. *In Omega (Dunklings) red suede box, good condition.*

\$500

Ex Robert Rossini Collection.



1748*

Lady's wristwatch, vintage Longines Admiral, 200m divers, all stainless steel with screw down case back in very good condition and measuring 35mm in diameter, including the screw down fully signed crown, a depth of 11mm, unidirectional rotating bezel, matte black dial with luminous hours markers and silver minute marks, date window at 3 o'clock position, sapphire crystal, bracelet is all original signed Longines stainless steel. *In working order but cannot be guaranteed for accuracy.*

\$300

Ex Robert Rossini Collection.

1749

Gent's wristwatch, vintage Titoni Airmaster Rotomatic, c1960s, military style, 21 Jewels, stainless steel, black dial with white roman numerals, date window at three o'clock and sweep seconds hand, case 38mm (including crown), black leather bracelet, in working order but not tested for accuracy. *Very good condition.*

\$120

Ex Robert Rossini Collection.

1750

Gent's wristwatch, vintage Titoni Cosmo King Rotomatic, c1970s, 25 jewels, dual calendar with sweep seconds hand, luminous numerals, stainless steel case and hands, black dial, case 35mm (not including crown), black leather bracelet, in working order but not tested for accuracy. *Excellent condition.*

\$150

Ex Robert Rossini Collection.

1751

Gent's wristwatch, Yema Antichoc, Sous Marine, c1970s stainless steel, manual wind, case 40mm (including crown), missing turning bezel, phosphorous numbers (no longer luminous), red leather bracelet, in going condition but not tested for accuracy. *Some wear to case, fine.*

\$80

Ex Robert Rossini Collection.

1752

Gent's wristwatch, Minorva, automatic, two register chronograph, stainless steel case, plated rose gold, black dial signed, back with see-thru glass window, case size 42mm (with crown), 12mm thick, crown with blue endstone, black leather bracelet, in working order but not tested for accuracy. *Excellent condition, as new.*

\$200

Ex Robert Rossini Collection.



lot 1753

1753*

Gent's wristwatch, Seiko 5 sports watch, model SNZF83, stainless steel case and bracelet, Japanese automatic movement, 23 jewels, Hardlex crystal, black dial, luminous hands and markers, day and date calendar display at 3 o'clock position, rotatable bezel, bi-fold clasp with secure lock and quick release, see-thru screwdown caseback, 100M water resistant, case diameter: 42mm (including crown), case thickness: 12mm, lug width 22mm. *New, with box and papers.*

\$200

Ex Robert Rossini Collection.



1754*

Gent's wristwatch, Seiko automatic divers, model SKZ330, black, rubber polyurethane rubber strap, uni-directional rotating black plastic bezel, black dial with luminous hands and index hour markers, minute markers around the outer rim, dial type: analog, luminescent hands and markers, day of the week and date display at the 3 position, automatic movement, scratch resistant Hardlex crystal, solid case back, case diameter: 45 mm, case thickness: 19 mm, band width: 20 mm with Tang clasp, water resistant at 200 metres/660 feet, functions: date, day, hour, minute, second. *New, in original Seiko box.*

\$120

Ex Robert Rossini Collection.

1755

Gent's wristwatch, Seiko model 5 Sports SNZG67K1, automatic movement, 7S36B, twenty three jewels, stainless steel case and bracelet, white dial, Hardlex flat crystal, bezel: uni-directional turning, water resistant: 100 m, diameter: 41 mm (excluding crown), thickness: 13.4mm. *New, with original box and papers.*

\$100

Ex Robert Rossini Collection.



1756*

Gent's wristwatch, Seiko model 5 Sports SNZG67K1, automatic movement, 7S36B, twenty three jewels, stainless steel case, dial and bracelet, Hardlex flat crystal, bezel: unidirectional turning, water resistant: 100 m, diameter: 41 mm (excluding crown), thickness: 13.4mm. *New, with original box and papers.*

\$100

Ex Robert Rossini Collection.

1757

Gent's wristwatch, Emporio Armani, model AR0293, battery powered quartz movement, watch functions: second, minute, hour and date, analogue, brown dial, mineral glass crystal, yellow gold plated stainless steel case, buckle clasp, brown leather bracelet, water resistant up to fifty metres. *As new, in original box.*

\$100

Ex Robert Rossini Collection.

1758

Gent's writstwatch, Emporio Armani, three register chronograph AR-5100, all stainless steel, case measures 40mm (including crown) quartz movement, black dial, date window at 3 o'clock, luminous hands and hour batons, in working order but not tested for accuracy. *Very fine.*

\$80

Ex Robert Rossini Collection.

1759

Gent's wristwatch, Wenger Mountain Commando, Swiss made quartz chronograph movement, 42mm diameter, black ion plated stainless steel case, black dial with chronograph sub dials, date window at 4 o'clock, black nylon strap with pin buckle, water resistant to 100m. *Lightly used, in original box.*

\$70

Ex Robert Rossini Collection.



1760*

Gent's wristwatch, Doxa chronograph sport, quartz movement, model 120.10, case measurement: 45mm, stainless steel, water resistant: 10m, sapphire crystal, black dial, thick black rubber bracelet. *New in box.*

\$150

Ex Robert Rossini Collection.

1761

Lady's full hunter pocket watch by Elgin, gold plated with 9 carat gold chain and heart charm (21.6 g for chain only) (gross weight 58.8 g). *Fine.*

\$350

1762

Gent's wristwatch, Swiss military (8304), three register chronograph, quartz movement, stainless steel case (40mm to crown), black dial, phosphorous numerals, water resistant to 100m, black rubber bracelet. *Not working, very fine.*

\$100



1763*

Gent's wristwatch, Giorgio Milano, chronograph, model FS00, stainless steel case and bracelet, black and orange dial with Arabic numerals 12 and 6, and three subdials, includes seconds hand. *In original case, this dirty, with operating instruction papers, warranty card and original retail price tag, requires a new battery, otherwise as new.*

\$150



1764*

Coin pocket watch, gold plated case with open face fitted with reverse of an Australian 1937 crown, black hands and black Roman numerals impressed into surrounding bezel, by The Coinwatch Company, Swiss works. *In Coinwatch box of issue with card, needs battery, extremely fine.*

\$100

1765

Gent's wristwatch, Guess, stainless steel rectangular case (44x28mm) white patterned dial with black Roman numerals and black edged white arms, seconds dial, leather band; M.C. \$ T./Europa gent's wristwatch, grey coloured case (35mm) with stainless steel back, grey dial with luminous hands and seconds hand, Arabic numerals, as new leather band. *Both need batteries, otherwise extremely fine. (2)*

\$100

1766

Gent's quartz wristwatches, Capezio sports watch, stainless steel case and two-tone band; Pulsar stainless steel two-tone case and bracelet; Seiko gold plated case with stainless steel back, black dial, leather band; Seiko gold plated case with stainless steel back, gold face with moon and stars feature window, leather band. *All need batteries, very fine. (4)*

\$100



1767*

Gent's wristwatch, Quinn, sterling silver case with screwback, Quinn leather band, white dial with black Roman numerals and black hands. *Working condition unknown, very fine.*

\$100



1768*

Gent's wristwatch, Omega Seamaster automatic, gold plated case (35mm) with stainless steel back, beige dimple pattern dial with gold hands and seconds hand, 12, 3 and 9 Arabic numerals and bar indicators, day indicator at 6 o'clock, leather band. *In working order, very fine.*

\$100



1769*

Gent's wristwatch, Seiko Mickey Mouse quartz chronograph, gold plated case (38mm) with stainless steel back and leather band, three subdials and day indicator with alarm, cream dial with matching gold edged hands and seconds arm. *Cased, needs a battery, otherwise good very fine.*

\$150



1770*

Gent's wristwatch, Seiko Mickey Mouse quartz, gold plated case (34mm) and matching bracelet, stainless steel back, gold starburst dial with Mickey's arms as the hour and minute hands, day date indicator and seconds arm. *Needs a battery, otherwise very fine.*

\$100



1771*

Gent's wristwatch, Maurice Lacroix, gold plated case (30.5mm) with stainless back, gold hands, no indicator marks, gold mesh pattern dial, leather band. *Needs battery, otherwise good very fine.*

\$100

1772

Gent's wristwatch, Callaway Golf, model CY2005, stainless steel case (38mm) with matching bracelet, dark blue dial with yellow bar indicators, white hands and yellow second hand, day indicator; Seiko Sports 100 gent's quartz wristwatch, America's Cup 1987 commemorative issue, stainless steel case, black dial, luminous dot and bar indicators and hands, seconds hand, day/date window, black rubber wrist band (broken). *Both need battery, very fine. (2)*

\$70



1773*

Gent's quartz diver's wristwatch, Casio, model AMW330, stainless steel case (45mm), gold dial with three subdials and day indicator, gold edged white hands and bar indicators, seconds hand, rotating indicator bezel, black rubber wristband. *Needs battery, otherwise extremely fine.*

\$90



1774*

Gent's wristwatch, Rado DiaStar black ceramic, quartz, grey dial with silver hands and dot indicators, stainless steel back and bracelet. *Needs a battery, very fine.*

\$100



1775*

Middle Bronze Age, Western Europe, (c1400BC), copper alloy axe head, (length 135mm), cast in two pieces then hammered together, large flanges at sides, curved blade edge (broken), notch for rope attachment. *Attractive green patina, damaged blade, very fine and rare.*

\$170

1776

Ancient Roman footrule, foldable with catch pins and lamella to maintain the rule unfolded, outside of the square cross section rule is divided by punch marks into sixteen Greek digiti (fingers) or 18.3mm; the inside is divided into four Greek palmi (palms) or 72-74mm; a third side is divided into twelve Roman unciae (inches) or 24mm and has an inscription; fourth side is also inscribed; length 293mm, folded 148mm, cross section 3-3.5mm. *Age patination, fine for period.*

\$300

Ex Mark Marshan Collection.



1777*

China, belt-hooks, in bronze 70 and 55mm, from the 2nd century B.C., each with inlay in silver as a design of a geometric pattern, each with internal knuckle to hook onto end of belt and a hook to catch the other end, (See article in Art and Antiques, October 29, 1977, Vol. 29, 11). *Fine - very fine and rare.* (2)

\$400

Ex Noble Numismatics Sale 86 (lot 3542).



1778*

China, Ming period (1368-1644), porcelain tripod censer, blue and white porcelain, made in the late Ming under Wanli (Shen Zong) (1573-1620); height 97mm, diameter 85mm with three legs and two projections as handles, flower pattern decoration. *Fine.*

\$350

1779

Indonesian wood statuettes, twentieth century, one pale brown, height 31cm of a stylized woman holding her breasts and displaying a prominent vagina; another yellow-brown, height 15cm of a person with very large ears and with disproportionately large hands covering the pubic area. *Very fine.* (2)

\$100

Ex Mark Marshan Collection.

1780

Indonesian animal horn statuettes, twentieth century, height 107mm, formerly used as a tool handle, features a squatting man carrying a younger man on his back, the younger man wearing short pants carved into the horn. *Very fine.*

\$60

Ex Mark Marshan Collection.



detail

1781*

Hunting horn with scrimshaw, c1830s, made from a buffalo horn (370mm long), depicting the name, 'Wm.Kerby/IVth/King's Own Regimt', also a three-masted English galleon, English Royal arms, a woman sitting astride a barrel of brandy, a Union Jack flag, a mermaid with a hand-held mirror, various floral decorations and a kangaroo in the style of early 19th century drawings of same. *Very fine and rare early Australiana item.*

\$7,500

Wm.Kerby, actually Private William Kirby, was a member of the 4th King's Own Regiment. This unit served in Australia from 1832-1837 at Sydney, Victoria, South Australia, Tasmania and Swan River Colony. In Historical Records of Victoria (Vol 1) there is a record of the testimony of Corporal John Naylor on 12 April 1837 at the inquest post mortem of a member of his regiment held at Port Phillip.

In his testimony Naylor states, 'I am a corporal in the 4th Regiment belonging to the detachment stationed here. On the evening of the seventh instant Private William Kirby of the same regiment was missing. I have never seen him since, until about half an hour ago when I was told his body had been found in the river opposite the town. I went there and on examining the body I ascertained and am quite positive it was the body of the above mentioned Will Kirby.'

1782

Travelling surgical kit, English made c1870s-1890s, housed in a folding leather pouch (approx 14x8cm when folded), contains several items including silver implement marked WS from Sheffield, 1866; tenaculum in tortoise shell sheath marked S.Mawson & Thompson, London (1870-1901); long nosed implement engraved T*P; blunt ended scissors by Robert McQueen & Sons, Newcastle (1840-1890); tissue forceps, thongs and three items in tortoise shell sheaths by Skidmore, Sheffield (1850-1920); one bone handled item; one bone item opening to reveal piercing needle. *Damage to leather case, otherwise fine - very fine.*

\$230

Ex Mark Marshan Collection.

1783

Centenary of NSW Contingent to the Soudan, 1885-1985, includes medals in silver, gilt (2), bronze (32mm) (C.1985/104) (4); unused postcards (12); first day covers and stamped postcards (6) includes two numbered limited editions with one signed by Sir Roden Cutler VC; Centenary Commemorative Parade program; Royal NSW Regt 1988 Regimental Dinner Menu; typed history of NSW forces in Soudan 1885; record of service sheet for Sub Inspector Louis Parkinson, NSW Police who served in Soudan; 2/7th Aust Infy Bn Assn WWII unit statistics; A Heritage Kit April 25, 1915 issued c1990 featuring various Anzac prints and history and other prints of various Australian artworks (the folder and a few inserts with foxing); First Fleet postcards, all with First Fleet stamp affixed (24), also a small number of used stamps. *Poor - uncirculated. (lot)*

\$100

1784

Sydney Yachting, ephemera including zinc printing plate, photo, magazines all in a box plus wooden mock-up of Royal Humane Society Life Saving medal presented to A.McKibbon Big Flood, Boat Harbour, 5th August 1958 'For Bravery'. *Fine.*

\$100

1785

Melbourne Invitation Committee, deluxe invitation book, to the International Olympic Committee, extending an invitation to celebrate the XVI Olympiad in Melbourne, in 1956, suede bound and bearing in enamel the Coat of Arms of the City of Melbourne on the cover, I-XIV plus 63 pages of black and white photos showcasing Melbourne's sport, culture and wildlife, together with architects' impressions of proposed venues, the arena, swimming pool and stadium, printed in Melbourne, enamelled crest on front cover by Stokes & Sons Pty Ltd. with 'John M.Chapman Collection' bookplate. *In excellent condition.*

\$750



1786*

Painting, 'Little Lon' Life in Little Lonsdale Street, a watercolour by Philip J.Gray, 70cmx52cm, framed and glazed (98cmx81cm), signed lower left.

\$950

Viewed from the intersection of Russell and Little Lonsdale Streets, the artist has based his painting on actual photographs from the period 1850-1860, and brought it to life with figures which typified the activities of this once notorious precinct in old Melbourne. On the left corner is the Old Governor Bourke Hotel. Little Lonsdale Street, or 'Little Lon' as it was known, was visited by people from all walks of life. Politicians rubbed shoulders with sailors and soldiers and many other types. Ladies entertained men of all social status, the brothels and boarding houses were famous, not least for being implicit in the disappearance of the Golden Mace from State Parliament, to this day unexplained.

Caroline Hodgson, aka Madame Brussels was one such figure of notoriety in the 1870s, her establishment enjoyed the patronage of many powerful and influential figures who enjoyed the company of her 'Flash Girls'. We ought not forget the ordinary folk, the tradesmen, shopkeepers and the penniless who through poverty shared an existence in this extraordinary place.

1787

Patience cards, early twentieth century, four decks housed in a portioned box (L 114mm, W 84mm, H 60mm), with fold-over lid, two decks by Ferd.Piatnick and Sons, Vienna, the other two by Goodall & Son Lim.d, London, together with a booklet 'Selected Patience Games' by Angelo Lewis, 1917, published by Goodall. *Very fine - good extremely fine.* (lot)

\$60

Ex Mark Marshan Collection.

1788

Playing cards, by Arrco Playing Card Co, Chicago, USA, reverse design in green, dark red and white and features a young girl walking two Scotch terriers, c1950s, deck box does not appear to be original, stored inside a cribbage board/box made of solid mid-brown wood with dark brown edging, inlaid with darker wood and the board with inlaid bone sections for the playing pegs and various ornate decoration, also in the deck is a Contact Bridge Scoring card. *Very fine.*

\$90

Ex Mark Marshan Collection.

1789

Cigarette cards, Wills's cigarette cards on plastic sheets near complete or complete sets of Specialities War Incidents 1915 49/50 (missing No.33); 1938 Air Raid Precautions 50/50; Specialities Britain Defenders 1915 50/50. *Many fine or better; a few toned.* (149)

\$150

1790

Cigarette cards, Wills's cigarette cards on plastic sheets near complete or complete sets of Life in the Royal Navy 1939 45/50; 1938 Air Raid Precautions 50/50; VC winners 1926 part set 22/50; Carreras Military Uniforms (House of Craven) 1976 50/50. *Many fine or better; a few very good, several toned.* (167)

\$150

1791

Cigarette cards, John Player cigarette cards on plastic sheets complete sets of Modern Naval Craft 1939, 50/50; Aircraft of the Royal Air Force 1938, 50/50; in an old cigarette card folder, Military Uniforms of the British Empire Overseas 1938, 50/50. *Fine or better; a few toned.* (150)

\$100

1792

Assorted postcards and greeting cards, c1900-1930s, New Zealand scenery and buildings, Australia - Tasmania, New South Wales, Victoria, also English country scenes and cathedrals; Hawaii, Fiji, shipping including Visit of the American Fleet to Australia. *Good - very fine.* (approx 330)

\$350

1793

Comical postcards, mostly risqué and hilarious, 1940s-1960s, English colour issues. *Stored in a quality photo album, unused.* (300)

\$150

GREAT BRITAIN GOLD COINS



1794*

Ancient Britain, Gallic War imports, Ambiani, uniface gold stater (6.2g), obverse plain, reverse sinuous horse r. (S.11, Sills 2b; ABC 16). *Nearly extremely fine.*

\$600

Ex Status Sale 228, 3.11.2005 (lot 7778).

Choice Treaty Period Gold Noble



1796*

Edward III, (1327-1377) fourth coinage, 1351-77, with French title, half noble, London, inverted E and pellet in centre (S.1523). *Nearly very fine and rare.*

\$1,500

Private purchase from R.Lobel, 22/3/1977 and L.Filacourdis Collection.

Fine Work Five Guineas 1701



1797*

William III, 'fine work' five guineas, 1701 (S.3456). *Some underlying mint bloom, extremely fine or better and rare.*

\$17,000

Choice Young Head Five Guineas 1741



1795*

Edward III, (1327-1377) Treaty period (1361-9) Noble, London, mm cross potent, annulet before Edward (S.1503). *Struck on a full flan, portrait slightly double struck, a bold impression, nearly extremely fine and rare thus.*

\$3,500

1798*

George II, young head, five guineas, 1741 (S.3663A). *Considerable mint bloom, good extremely fine and very rare in this condition.*

\$25,000

In a slab by NGC as AU55.

High Grade Old Head Five Guineas 1748



1799*
George II, old head, five guineas, 1748 (S.3666). *Some mint bloom, good extremely fine and very rare in this condition.*

\$18,000

In a slab by NGC as AU55.



1800*
George II, young head, two guineas, 1739 (S.3667B). *Nearly extremely fine.*

\$1,500



1801*
George II, young head, two guineas, 1739 (S.3667B). *Reverse rim bruise at 3.30 o'clock, otherwise good very fine.*

\$2,000



1802*
George III, fourth head, guinea, 1777 (S.3728). *Attempted piercing above king's head, otherwise good very fine.*

\$400



1803*
George III, fifth head or spade type, guinea, 1793 (S.3729). *Good very fine.*

\$600



1804*
George III, fourth head, half guinea, 1778 (S.3734). *Very fine.*

\$450



1805*
George III, first head, gold third guinea, 1799 (S.3738). *Good very fine and the rarest date.*

\$400

Ex Alan Jordan Collection.



1806*
George III, first head, third guinea, 1802 (S.3739). *Scratched under bust, otherwise extremely fine.*

\$250



1807*
George III, second head, third guinea, 1809 (S.3740). *Extremely fine.*

\$250



1808*
George III, second head, third guinea, 1810 (S.3740). *Nearly extremely fine/extremely fine.*

\$300

Private purchase from R.Lobel 8/7/1976 and L.Filacouridis Collection.



1809*
George III, new coinage, sovereign, 1820 (S.3785C). *Good very fine.*

\$1,000



1810*
George III, new coinage, sovereign, 1820 (S.3785C) closed 2 in date. *Several minor edge knocks, otherwise good very fine and scarce in this condition.*

\$700

Ex Alan Jordan Collection.



1811*
George III, new coinage, half sovereign, 1817 (S.3786). *Nearly extremely fine.*

\$500



1812*
George III, new coinage, half sovereign, 1818 (S.3786). *Nearly extremely fine.*

\$600

1813
George III, new coinage, half sovereign, 1818 (S.3786). *Mount mark damage in four spots on edge, polished, otherwise very good.*

\$150



1814*
George IV, bare head, two pounds, 1823 (S.3798). *Nearly extremely fine.*

\$2,000

1815

William IV, half sovereigns, 1835, 1837 (S.3831). *Good - nearly fine.* (2)

\$300

1816

Queen Victoria, young head, sovereigns, shield reverse, 1857, 1872 die 74 (S.3852D, 3853B). *Extremely fine; very fine.* (2)

\$600

1817

Queen Victoria, young head, sovereigns, shield reverse, 1873 die 23 and St George reverse, 1873 (S.3853B, 3856). *Extremely fine.* (2)

\$700

1818

Queen Victoria, sovereigns, young head, 1871, Jubilee head, 1887, old head, 1900 (S.3856, 3866, 3874). *All with small edge nicks, one with an edge bump, otherwise very fine - extremely fine.* (3)

\$900

1819

Queen Victoria, sovereigns, young head, 1871 (S.3856A), Jubilee coinage, 1890 (S.3866B), old head, 1899, 1900 (S.3874) (2). *The second coin polished, fine - very fine.* (4)

\$1,200

1820

Queen Victoria, young head, half sovereigns, shield reverse, 1846, 1857, 1866 die 15 (S.3859 [2], 3860) (3). *Very good - very fine.* (3)

\$450

1821

Queen Victoria, young head, half sovereigns, 1856 (S.3859); 1883 (S.3861). *Very good; fine.* (2)

\$270

1822

Queen Victoria, young head, half sovereigns, shield reverse, 1870 die 36, 1872 die 150, 1874 die 342 (S.3860, 3860D [2]) (3). *The first with a few edge nicks, otherwise good fine - very fine.* (3)

\$450

1823

Queen Victoria, young head, half sovereign, shield reverse, 1884 (S.3861). *Good very fine.*

\$150

1824

Queen Victoria, Jubilee coinage, sovereign, 1887 (S.3866). *Extremely fine.*

\$300



1825*

Queen Victoria, Jubilee coinage, half sovereign 1887 (S.3869). *Attractively toned, nearly uncirculated.*

\$250

1826

Queen Victoria, Jubilee coinage, half sovereigns, shield reverse, 1891, 1892 (3) (S.3869D). *Fine - very fine.* (4)

\$600

1827

Queen Victoria, old head, half sovereign, 1898 (S.3878). *Lustrous, extremely fine.*

\$150

1828

Queen Victoria, half sovereign, 1896 (S.3878), gold jewellery copy; George V, one third farthing, 1913 (S.4062); George VI, sixpence, 1945, threepence, 1937 (S.4084, 4112); Elizabeth II, shilling, 1957 (S.4147); also USA, Morgan silver dollar, 1886. *The last with bagmarks, otherwise uncirculated.* (6)

\$200



lot 1829 part



1829*

Edward VII, matte proof set, five pounds to Maundy penny 1902(S.PFS9). *In case of issue, the half sovereign has been replaced by a 1902 Sydney, silver grey toned, good extremely fine - nearly FDC.* (13)

\$5,000

1830

Edward VII, sovereigns, 1904, 1906, 1908, 1910 (S.3969). *The second and third coins with a few edge nicks, otherwise very fine - extremely fine.* (4)

\$1,200

1831

Edward VII, sovereign, 1906; half sovereign, 1908 (S.3969; 3974B) (2); George V, sovereign, 1913 (S.3996). *Very fine - extremely fine.* (3)

\$750

1832

Edward VII, half sovereigns, 1903, 1904, 1909 (S.3974A [2], 3974B). *The last with edge bump, good fine - very fine.* (3)

\$450

1833

Edward VII, half sovereign, 1906 (S.3974B). *Good very fine.*

\$170

1834

George V, sovereign, 1911. *In a coin case marked SOVEREIGN on lid, minor edge nicks, otherwise uncirculated.*

\$300

1835

George V, sovereigns, 1911, 1913 (2) (S.3996). *One 1913 with a few edge nicks, extremely fine, the rest fine - very fine.* (3)

\$900

1836

George V, half sovereigns, 1911, 1914 (S.4006). *Polished, otherwise very fine; extremely fine. (2)*

\$300

1837

Elizabeth II, proof sovereigns, 1979 (S.4204). *FDC. (2)*

\$600

1838

Elizabeth II, proof sovereign, 1980 (S.4204). *In case of issue with certificate, FDC.*

\$300

1839

Elizabeth II, proof half sovereigns, 1980 (S.4205). *In cases of issue with certificates, FDC. (4)*

\$600

1840

Elizabeth II, proof sovereigns, 1985 (S.4271). *In cases of issue with certificates, FDC. (2)*

\$600

1841

Elizabeth II, proof ten pounds, 1988 Britannia (S.4296). *In cases of issue with certificates, FDC. (2)*

\$260

1842

Elizabeth II, proof bullion type sovereign, 2000 (S.4430). *FDC.*

\$300

1843

Elizabeth II, Royal Marriage nine coin proof set including gold five pounds and sovereign, 1981 (S.PGS02). *In plush case of issue, FDC.*

\$2,000



1844*

Ireland, Republic, medallic proof fifty ecu, 1990 (Bruce X.3) (AGW 0.4422oz). *FDC.*

\$600

1845

Guernsey, Elizabeth II, proof gold twenty five pounds, 2000 Queen Mother's 100th Birthday (KM.103). *In a commemorative specially postmarked philatelic coin cover, uncirculated - FDC.*

\$300



1846*

Isle of Man, Elizabeth II, proof sovereign, 1979 (t) (KM.27). *With certificate, FDC.*

\$300

GREAT BRITAIN SILVER & BRONZE



1847*

Cnut, (1016-1035), silver penny, short cross type, issued 1029-1035/6, obv. CNV T RECX, bust with sceptre to left, rev. BRVNSTAN ON DE (Brunstan of Thetford), with short cross voided, (S.1159, N.790, Br.4, BMC xvi). *Toned, good very fine and scarce.*

\$500

Ex Spink Coin Auctions Sale 90, March 16, 1992 (lot 264), purchased from Monetarium, August 17, 1992.



1848*

Harold II, (1066), silver penny, Pax type, (1.33 grams), obv. crowned head left with sceptre, HAROLD REX ANG, rev. PAX across field around ROSCETF ON EOFER, (Roscel of York mint), (S.1186, N.836, BMC.-). *Toned, scratch on reverse, otherwise nearly extremely fine and rare.*

\$3,000

Ex Henry E.Parkes (bought in London) and Dr John Marden Collection in 1915.



1849*

William I, the Conqueror (1066-1087), silver penny, Bonnet type, BMC 2, Br.II type, issued 1068-1070, (1.35g), obv. facing crowned bust around + PILLEMV REX, rev. cross voided between crescents, centre an annulet, in each angle pile surmounted by pellet, around D-ORR ON EOFERP (Thorr of York mint), (S.1251, N.842, BMC 178). *Dark tone, nearly extremely fine and rare.*

\$1,500

Ex Henry E.Parkes (bought in London) and Dr John Marden Collection in 1915.



1850*

Edward I, (1272-1307) new coinage from 1279, silver penny, London, type 4d (S.1397). *Softly struck, toned good fine.*

\$50

Ex Colchester Hoard.



1851*

Edward I, (1272-1307) new coinage, from 1279, silver penny, Canterbury type 10c-f (S.1419). *Very fine.*

\$60

Ex Colchester Hoard.



1852*

Edward I, (1272-1307) new coinage, from 1279, silver penny, Lincoln type 3g (S.1427). *Very fine.*

\$70

Ex Colchester Hoard.



1853*

Edward I, (1272-1307) new coinage from 1279, silver penny York type 2b (S.1429). *Very fine.*

\$80

Ex Colchester Hoard.



1854*

Edward I, (1272-1307) new coinage, from 1279, silver penny, York type 3b (S.1429). *Nearly extremely fine.*

\$100

Ex Colchester Hoard.



1855*

Edward I, (1272-1307), new coinage from 1279, farthing, type 3de, London (S.1445A; N.1053). *Fine.*

\$100



1856*

Edward III, (1327-1377), groat, London mint, plain cross, Treaty Period, issued 1361-1369, annulet before EDWARD, reverse CIVI TAS LON DON, (S.1616, N.1247). *Round, light blue peripheral tone, good fine and scarce in this condition.*

\$200

1857

Henry VI, first reign (1422-1461), cross-pellet issue, 1454-61, silver penny, York, Archbishop William Booth (S.1940); Edward IV, second reign (1471-1483), silver halfpenny, London, mm pierced cross, 1473-7 (S.2137; N.1667) (0.34g). Second coin short of flan, fine - very fine. (2).

\$100

1858

Henry VIII, (1509-1547), first coinage 1509-26 silver penny, Durham, Bishop Ruthal TD beside shield mm radial star (S.2382); third coinage 1544-7 silver halfpenny, London (S.2385). *Fine; good fine.* (2)

\$200



1863*

Edward VI, (1547-1553), fine silver issue, 1551-3, shilling, mm tun (S.2482). *Edge chipped, otherwise nearly very fine.*

\$280

1859*

Henry VIII, (1509-1547), second coinage, 1526-44, groat, London, mm lis (S.2337E). *Good portrait, very fine.*

\$400

Private purchase from CNG.



1864*

Philip & Mary, (1554-1558), shilling, undated, full titles (S.2498). *Full flan and evenly struck for this, toned, good fine and rare thus.*

\$1,000

1860*

Henry VIII, (1509-1547) third coinage, 1544-7, groat, Southwark (S.2371). *Possibly plugged, minor flan chip, nearly very fine.*

\$150

1861

Henry VIII, posthumous coinage (1509-1547), silver groat, Bristol mint (S.2406); Elizabeth I (1558-1603), sixth issue silver sixpence, 1583, mm A (1582-4) (S.2578A). *Clipped, fair; crinkled, fine.* (2)

\$100



1865*

Elizabeth I, (1558-1603) third and fourth, sixpence, 1573, mm ermine (S.2563); fifth issue, threepence 1578/7 overdate, mm Greek cross (S.2573). *Fine - good fine.* (2)

\$250

1862*

Edward VI, (1547-1553), silver crown (30.18 g), third period, fine silver issue, London mint, mm Y, dated 1551. obv. EDVVARD' : VI : D' G: AGL': FRAnC':Z: hIBER': RE. Y: Edward on horseback riding right, .I551. below, rev. POSVI DEV: AD IVTOREM MEVM :Y., coat-of-arms over long cross fourchée, (S.2478, North 1933). *Nearly very fine, attractively toned, with a few light marks on the obverse.*

\$1,000

1866

Elizabeth I, (1558-1603), seventh issue, shilling, mm 2 (1602) (S.2584). *Very good.*

\$100

Ex Alan Jordan Collection.

Outstanding James I Crown



1867*

James I, (1603-1625) second coinage, 1604-19, crown, mm Lis (1604-5) (S.2652). *Attractively toned, well struck, almost extremely fine and very rare in this superb condition, one of the finest known.*

\$14,000

In a slab by NGC as XF40.

1868

James I, (1603-1625) second coinage, 1604-19, shilling, fourth bust, mm rose (1605-6). *Scratches over portrait, otherwise fine.*

\$70



1869*

Charles I, (1625-1649), Tower Mint, 1625-1642, halfcrown (15g), mm bell, third horseman, no caparisons on horse, scarf flying from king's waist. *Very fine.*

\$250



1870*

Charles I, (1625-1649) Tower Mint under Parliament, Group V halfcrown mm sun 1645-6 (S.2780). *Flat on horse's head, otherwise attractively toned nearly extremely fine or as struck, very rare thus.*

\$2,500

In a slab by NGC as AU55. Ex Grosvenor Collection.



1871*

Charles I, (1625-1649) Tower Mint shilling, group D, fourth bust, type 3a, mint mark crown (1635-6) (S.2791); another type 3b with plumes above shield (S.2793). *Very good/good fine. (2)*

\$300



1872*

Charles I, (1625-1649) Tower Mint shilling, type 4.4 group F, mm triangle (1639-40) (S.2799). *Virtually as struck, appears to be a hoard coin, nearly extremely fine and scarce in this state.*

\$250

Private purchase from R.Lobel 8/1980 and L.Filacouridis Collection.



1873*

Commonwealth, (1649 - 1660), silver crown, 1653, (30.02 g), mm sun, obv. .THE . COMMONWEALTH. OF ENGLAND. sun mm, shield with cross of St. George within wreath, rev. 1653 . GOD . WITH .VS (V over inverted A), shields of England and Ireland co-joined, (S.3214, ESC 6A [R3], D.3772, KM.392). *Toned, nearly extremely fine and a very rare variety.*

\$2,500

Ex Alan Jordan Collection.



1876*

Commonwealth, Oliver Cromwell, (1649 - 1658), silver crown, 1658, by Simon, (30.26 g), obv. OLIVAR.D GR P .ANG. SCO. HIB.& PRO, bust of Olivar Cromwell to left, rev. 16 58 PAX . VAERITVR. BELLO, crowned arms, (S.3226, ESC 10, D.3773, KM.D207). *Toned, nearly extremely fine with usual die crack and the appearance of a secondary die crack above and rare.*

\$3,500

Ex Alan Jordan Collection.



1874*

Commonwealth, (1649 - 1660), halfcrown 1653 (S.3215). *Toned, fine.*

\$300



1875*

Commonwealth, (1649 - 1660), silver sixpence, 1651, (3.06 g), mm sun, obv. .THE . COMMONWEALTH. OF ENGLAND. sun mm, shield with cross of St. George within wreath, rev. 1651 . GOD . WITH .VS., shields of England and Ireland co-joined, (S.3219, ESC 2484, KM.389.1). *Toned, very fine.*

\$200

Ex Alan Jordan Collection.



1877*

Oliver Cromwell, shilling, 1658 (S.3228). *Scratches left of shield and rim dent at 3 o'clock on reverse, otherwise fine and rare.*

\$1,000



1878*

Charles II, hammered coinage, third issue, 1660-2, shilling, mm crown (S.3322). *Toned, evenly worn, very good/fine.*

\$300



1879*
Charles II, crown, 1662, first bust with rose below, by Roettier, (29.68 g), obv. CAROLVS . II . DEI . GRA, laureate bust of Charles II to right, rev. 16 62 MAG. BR. FRA. ET. HIB. REX., arms with interlocking CC in angles, edge DECVS . ET . TVTAMEN., (S.3350, ESC 10, D.3774, KM.417.2). *Grey with blue and red patina, good very fine/nearly extremely fine and rare as such.*

\$2,000

Ex Alan Jordan Collection and purchased from Noble Numismatics Sale 63 (lot 868) and previously from the Bridgewater House Collection sold at Sotheby & Co, 15th June 1972 (lot 337 and illustrated).

The rose under the king's head signifies that the silver was English. 'In May 1661 [Charles] ordered that all coinage should be struck by machines, with edges either lettered or grained [and] demonetisation of the Commonwealth coinage was proclaimed as from 30 November. And Simon himself was sent to France to bring back the engineer Blondeau, to whom £1,000 was later to be paid for his mechanical equipment. While this was being installed [a] competition for the commissioning of the new dies was held between Simon and John Roettier, whom Charles had sent for from Flanders, not unmindful of the monetary help the family had given him in exile [and] Roettier was to have the work'. (C H V Sutherland, English coinage, 600-1900, London).



1880*
Charles II, crown, second bust, 1664 (S.3355; ESC 28). *Toned, nearly very fine.*

\$400

Ex Ira & Larry Goldberg Co. In a slab by NGC as VF20.

1881
Charles II, crown, third bust, 1672, edge dated vicesimo quarto (S.3358). *Good/very good.*

\$100



1882*
Charles II, pattern farthing or medalet, 1676, in silver, plain edge, by J.Roettier (Peck 492). *Slight planchet flaw at 11 o'clock on obverse, attractively toned, nearly uncirculated and very scarce.*

\$600

1883
James II, halfcrown, first bust, 1685 (S.3408). *Toned, very good.*

\$100



1884*
James II, shilling, 1685 (S.3410). *Weak on French arms, otherwise nearly very fine and rare.*

\$750



1885*
William and Mary, shilling, 1693 (S.3437). *Flan slightly flecked, has been lightly rubbed, otherwise good very fine.*

\$750

Ex Rex Jones Collection.



1886*
William and Mary, proof halfpenny, 1694, struck in copper on a 31mm flan, 2mm thick, (9.92g), obverse conjoined busts right, the King cuirassed, around GVLIELMVS. ET. MARIA toothed border both sides, reverse Britannia seated left on globe, with shield, spear and spray of leaves, date in exergue, BRITAN NIA legend around, (S.3452, Peck 612 EXR). *Light adjustment marks on obverse, nearly extremely fine and very rare.*

\$2,500

Ex Baldwin's Auctions No.47, The Gregory Collection, 25th September 2006 (lot 355).



1887*
William III, crown, third bust, 1696 (30.16g), obv. GVLIELMVS. III. DEI. GRA, laureate bust of William III to right, rev. 16 96 MAG. BR. FRA. ET. HIB. REX., arms, edge DECVS. ET. TVTAMEN. :NNO (sic). REGNI. OCTAVO.++ (S.3472, ESC 94, D.3782, KM.494.1). *Lightly toned, nearly very fine/nearly extremely fine and scarce as such.*

\$250

Ex Alan Jordan Collection.



1888*
William III, crown, third bust variety, 1700 (S.3474) duodecimo edge. *Nearly extremely fine.*

\$600



1889*
William III, shilling, fifth bust, 1700 (S.3516). *Good very fine.*

\$180

1890
William III, sixpence, 1697 (S.3531); Anne, shilling, 1711 (S.3610); fourpence 1706 (S.3595A). *Good fine - nearly very fine.* (3)

\$150

1891
William III, halfpenny, 1699 (S.3556); Ireland, halfpennies, Charles II, 1682 (S.6574), James II, 1685 (S.6576); very worn Byzantine bronze copper in Roman Empire holder. *In promotional 2x2 holders, poor - very good.* (4)

\$100



1892*
Anne, before the Union, crown, 1703 vigo (S.3576). *Nearly extremely fine and rare in this condition.*

\$5,000

In a slab by PCGS as AU50.



1893*
Anne, before the Union, halfcrown, 1703 Vigo (S.3580, ESC 569). *Good fine.*

\$150



1894*
Anne, before the Union, shilling, first bust, 1702 Vigo (S.3585). *Toned, very fine.*

\$350

Ex Noble Numismatics Sale 60 (lot 3741).



1895*
Anne, after the Union, crown, 1713 roses and plumes (S.3603). *Attractive gun metal grey patina, extremely fine and rare in this condition.*

\$4,500

In a slab by NGC as AU50.



1896*
Anne, after the Union, halfcrown, 1708E (S.3605). *Toned, very good/nearly fine.*

\$100



1901*
George I, Maundy set, 1727 (S.3658). *Toned, nearly extremely fine and scarce. (4)*

\$600



1897*
Anne, after the Union, shilling, third bust, 1708 (S.3610). *Good very fine.*

\$200



1902*
George I, first or 'Dump' issue copper farthing, 1717, obverse laureate and cuirassed bust right, wreath of eight leaves and three berries, GEORGIVS. REX. linear circle and toothed border both sides, reverse inverted die axis, Britannia seated on globe with spear, shield and spray of leaves, date in exergue, BRITAN NIA., edge plain (S.3661, Peck 783). *Proof-like with a hint of lustre, superb, good extremely fine and rare.*

\$1,800

Ex Baldwin's Auctions No.47, The Gregory Collection, 25th September 2006 (lot 527).



1898*
George I, shilling, 1720 (S.3645). *With mint bloom, good very fine/nearly extremely fine.*

\$300



1903*
George I, farthing, second issue, 1719, date in exergue (S.3662, Peck 815). *Good very fine and rare.*

\$750

Ex Baldwin's Auctions No.42, The William C.Boyd Collection, 28th September 2005 (lot 1113) and previously from George Henry Gaviller (1807-1879), (Boyd's uncle) and acquired c1880 from his estate (ticket stamped GHG).



1899*
George I, shilling, first bust, 1723 SSC (S.3647). *Nearly extremely fine.*

\$200



1904*
George I, copper farthing, 1719, second issue, with continuous obverse legend (P.815; S.3662; cfCooke 454). *Weakly struck in centre both sides, attractive dark brown with traces of crimson mint red, extremely fine (or nearly uncirculated) and rare.*

\$480

Ex Lorne Collection, Noble Numismatics Sale 82 (lot 1897) and previously J.Gartner Collection.

1900
George I, shillings, first bust, 1723 SSC (S.3647). *Nearly fine; good fine. (2)*

\$100



1905*
George II, old head, crown, 1743 roses (S.3688). *Attractive grey patina with golden highlights, good extremely fine and rare in this condition.*

\$3,500

In a slab by NGC as AU58.



1906*
George II, old head, shilling, 1743 roses (S.3702). *Considerable mint bloom, good extremely fine.*

\$450

1907
George II, old head, shilling, 1745 Lima (S.3703); **George IV**, bare head, shilling, 1825 (S.3812); **Queen Victoria**, Jubilee coinage, sixpence, 1887 (S.3928) and a Canberra florin 1927. *Fair - very fine.* (4)

\$50



1908*
George II, old head, shilling, 1750 (S.3704). *Nearly very fine.*

\$100



1909*
George II, old head, shilling, 1758. *Good very fine.*

\$100



1910
George II, old head shilling, 1758 and 1758/7 overdated (?) (S.3704). *Good very fine; very fine.* (2)

\$150

1911
George II, young head, sixpence, 1731 roses and plumes (S.3707); old head, 1743 roses (2), 1745 roses (S.3709), 1746 Lima (S.3710A), 1757 and 1758 (S.3711); **George III**, sixpences 1787 (S.3748, 9). *Very good - nearly very fine.* (9)

\$150



1912*
George III, Northumberland shilling, 1763 (S.3742). *Old tooling scratches in obverse field, otherwise attractively toned, extremely fine and rare.*

\$750



1913*
George III, proof shilling, 1787, plain edge, with hearts (S.3743; ESC 1226). *Lightly toned, nearly FDC and extremely rare.*

\$2,400

1914
George III, shillings, 1787 (S.3746). *Very good; fine.* (2)

\$70

1915
George III, shilling, 1787 (S.3743); **William IV**, groat, 1836 (S.3837); **Queen Victoria**, young head, half farthing, 1844 (S.3951), Jubilee coinage, shillings, 1887 (2), threepence, 1887 (S.3926 [2], 3931) (3); **Edward VII**, one third farthing, 1902 (S.3993); **George V**, third coinage, sixpence, 1926, threepence, 1926 (S.4034, 4035) (2), fourth coinage, florins, 1929, 1930, sixpence, 1936, farthing, 1933 (S.4038 [2], 4041, 4061) (4); also **Elizabeth I** sixpence and **George III** Irish halfpenny, 1770, both poor, the first holed, and a miniature **Queen Victoria** imitation of a half sovereign. *Poor - extremely fine.* (16)

\$100



1916*
George III, emergency issue, oval countermarked silver dollar of Charles III, 1793 IJ, Lima Mint, (S.3765A). *Toned, host coin nearly extremely fine, countermark good very fine and rare.*

\$600

Ex Alan Jordan Collection.



1919*
George III, Bank of England, dollar or five shillings, 1804, leaf to left side of E (S.3768, ESC 144). *Nearly extremely fine or better.*

\$400

Ex Alan Jordan Collection.



1917*
George III, emergency issue, oval countermarked silver dollar of Charles III, 1793 FM, Mexico City Mint, (S.3765A). *Toned, host coin good fine, obverse scratches, countermark good very fine and scarce.*

\$300

Ex Alan Jordan Collection.



1920*
George III, Bank of England, dollar or five shillings, 1804, leaf to left side of E (S.3768, ESC 144). *Parts of undertype clearly visible, otherwise good very fine.*

\$250

Ex Alan Jordan Collection.



1918*
George III, emergency issue, octagonal countermarked silver dollar, struck on a Charles III, 1796FM Mexico City Mint eight reales (S.3766). *Countermark well struck, very fine, host coin nearly very fine/very fine and rare.*

\$800

Ex Alan Jordan Collection.

1921
George III, Bank of England, dollar or five shillings, 1804 (S.3768). *Edge cut, mediocre.*

\$50

Found in Tasmania.



1922*
George III, gilt proof cartwheel penny, 1797 (Peck 1124; S.3777). *Nearly FDC and rare.*

\$2,000



1923*
George III, bronzed proof cartwheel penny, 1797 (late Soho) (Peck 1118; S.3777). *Nearly FDC and very scarce.*

\$1,000



1927*
George III, new coinage, proof crown, 1819, LX edge (S.3787). *Deep olive and grey brilliant tone, lightest friction on high points, otherwise FDC and extremely rare as such.*

\$8,000

In slab by PCGS as PR63.



1924*
George III, pattern cartwheel halfpenny, 1797, engrailed edge (Peck 1154). *Original pink copper toning, FDC and rare.*

\$1,500



1929*
George III, new coinage, sixpence 1816 (S.3791). *Nearly extremely fine.*

\$80



1925*
George III, fourth issue, copper proof penny 1806, plain edge (Peck 1350; S.3780) restruck by Soho Mint, Birmingham. *Nearly FDC.*

\$500



1930*
George IV, laureate head, halfcrown, 1820 (S.3807). *Very fine.*

\$150



1926*
George III, new coinage, silver crown, 1818 LVIII, (S.3787, ESC 211) *About as struck with proof-like surface, lightly toned, uncirculated.*

\$750



1931*
George IV, bare head, halfcrown, 1826 (S.3809). *Nearly very fine.*

\$120

Ex Alan Jordan Collection.



1932*
George IV, first issue, copper farthing, 1821 (S.3822). *Brown and red, uncirculated.*

\$150

1933
George IV, penny, 1825 (S.3823), engraved in script, on obverse, 'The Patron of Vice and Frivolity' and on reverse, '50,000 a Year to a German Whelp' and in bold letters, 'LEOPOLD'. *Good/very good.*

\$70



part

1934*
George IV, halfpenny, 1826 (S.3824); **Queen Victoria**, bun head, bronze pennies, 1881H and 1891 (S.3954); bun head, bronze halfpenny, 1860, beaded border (S.3956). *The first nearly extremely fine with marks on obverse, the last three red, nearly uncirculated, the last two illustrated. (4)*

\$380



1935*
William IV, proof halfcrown, 1831, plain edge (S.3834A) block WW on truncation. *Slight scuffing on neck, otherwise toned, nearly FDC.*

\$1,200

Private purchase from M.R.Roberts in 1991.



1936*
Queen Victoria, Gothic crown, 1847, proof with plain edge (S.3883). *Deeply toned, nearly FDC and rare.*

\$3,500

In a slab by NGC as PF62.



1937*
Queen Victoria, Gothic crown, 1847, undecimo edge (S.3883). *Toned, good extremely fine.*

\$1,800

Private purchase from M.R.Roberts in 1989.



1938*
Queen Victoria, young head, halfcrown, 1846 (S.3888). *Attractive light tone, nearly uncirculated.*

\$500

Private purchase from R.Lobel 29/2/1980 and L.Filacouridis Collection.

1939
Queen Victoria, young head, halfcrown, 1887 (S.3889). *Toned, good very fine.*

\$150



1940*
Queen Victoria, Gothic florin, 1860 (S.3891). *Toned, good very fine - nearly extremely fine.*

\$100



1941*
Queen Victoria, young head, shilling, 1877, die no 9 (S.3906A). *Good extremely fine.*

\$150



1947*
Queen Victoria, old head, halfcrown, 1898 (S.3938). *Good extremely fine.*

\$150



1942*
Queen Victoria, young head, shilling, 1882. *Toned, extremely fine and scarce in this condition.*

\$150



1948
Queen Victoria, old head, florin 1901; shilling, 1896; sixpence, 1900; threepence, 1897; farthing, 1896 (S.3939, 3940A, 3941, 3942, 3963). *The first nearly extremely fine, others uncirculated. (5)*

\$200

1943
Queen Victoria, young head, Maundy set, 1876. *In dated plush leather case of issue, toned, nearly uncirculated. (4)*

\$300

1949
Queen Victoria, young head, copper penny, 1854OT (S.3948) also George III cartwheel penny, 1797 (S.3777). *Toned extremely fine; fine (2)*

\$60

1944
Queen Victoria, Jubilee coinage, silver set, 1887, crown to threepence; also shilling 1890 (S.3921-2, 3924-9, 3931). *Extremely fine - uncirculated. (9)*

\$250

Ex Alan Jordan Collection.

1945
Queen Victoria, Jubilee coinage, halfcrown, 1890; sixpence 1890; threepence 1887; old head sixpence 1901, threepence 1901 (S.3924, 9, 31, 41-2). *Nearly extremely fine - good extremely fine. (5)*

\$100



1946
Queen Victoria, old head, crown, 1893 LVI (S.3937). *Good extremely fine.*

\$300



1950*
Queen Victoria, young head, penny, 1854OT (S.3948); bun head, bronze pennies, 1873 and 1877 (S.3954). *Brown and red, nearly uncirculated, the second a little spotty. (3)*

\$350

1951

Queen Victoria, young head, half farthing, 1843, 1844 (S.3952) (2), one third farthing, 1876 (S.3960). *The first two extremely fine, the last with edge nicks and some corrosion marks.* (3)

\$50



1952*

Queen Victoria, young head, copper third farthing, 1844 (for use in Malta) (S.3952). *Brown and red, nearly uncirculated.*

\$250



1953*

Queen Victoria, bun head, bronze penny, 1860 toothed borders (S.3954, dies 2/D). *Red, uncirculated.*

\$30

Ex Alan Jordan Collection.

1954

Edward VII, crown, 1902 (S.3978). *Nearly extremely fine.*

\$200



1955*

Edward VII, halfcrown, 1906 (S.3980). *Good extremely fine.*

\$250



1956*

Edward VII, florin, 1902 (S.3981). *Attractively toned, uncirculated.*

\$150

1957

Edward VII, shilling, 1902; sixpence, 1902 and Maundy threepence, 1909 (S.3982, 3983, 3987). *The first toned, nearly uncirculated, others uncirculated.* (3)

\$150



part

1958*

George V, first coinage, halfcrown, 1915; florin, 1914; shilling, 1918; sixpence, 1911; threepence, 1915; penny, 1914; halfpenny, 1917 (S.4011-5, 4051, 4056). *Nearly uncirculated - uncirculated.* (7)

\$200



1959*

George V, fourth coinage, proof crown, 1927 (S.4036). *Nearly FDC.*

\$300

1960

George V, fourth coinage, halfcrown, 1932; florin, 1935; shilling, 1936; sixpence, 1934; threepence, 1936; Jubilee crown, 1935 (S.4037-9, 4041-2, 4048). *Extremely fine - uncirculated.* (6)

\$120

1961

George V, Heaton Mint pennies, 1912H (76), 1918H (12), 1919H (17) (S.4052). *Mostly very good.* (105)

\$100

1962

George VI, first coinage, 1937, crown, halfcrown, florin (proof), English shilling (proof), Scottish shilling, sixpence, threepence (S.4078, 4080-5). *Good extremely fine - FDC.* (7)

\$150

1963

George VI, proof set, crown to farthing, 1937 (S.PS16). *With Royal Mint gilt and maroon case of issue, FDC.* (15)

\$400

1964

George VI, mint crown, 1951 (S.4111); Elizabeth II, proof sets, 1970, 1983 and one pound silver proof set, 1984-87 (S.PS2, 33 and S.4331, 2, 3, 5) (6); crown, 1953, 1981 (2) carded (S.4136, 4229 [2]) (3); Lsd/Decimal type coin set of twelve, cased, this cracked and marked; First Decimal Coins in folders (3); promotional copper ashtrays bearing design of Bank of England five pounds banknote dated 1944 (4). *Uncirculated - FDC.* (18)

\$150



1965*

Elizabeth II, Royal mint, metal samples (23mm), numbers 1, 3, 4, 5 and 6 in nickel or cupro-nickel, number 7 in aluminium, number 8 in brass and number 9 in bronze. *Nearly uncirculated - uncirculated.* (8)

\$400

1966

Elizabeth II, proof sets, 1983-1988 (S.PS33, 34, 35, 37, 39, 41) (6); proof silver one pound, 1983 and mint one pound, 1983 (S.4221) (2); set of five cased crowns, 1965-1981; medals, Elizabeth II rectangular cased medal in solid gilding metal by Sandhill Bullion Ltd; Charles and Diana betrothal medal, 1981, in cupro nickel, cased; Official Whitbread round the world race medals, 1989, in bronze in folders (2). *All proof set certificates with foxing, otherwise uncirculated - FDC.* (13)

\$120

1967

Elizabeth II, proof sets, 1983, 1984, 1985, 1986 (2), 1987 (S.PS33, 34, 35, 37 [2], 39) (6); mint crown, 1972 (S.4226); Britain's First Decimal Coins sets in folders (5). *The coins in the last folders all toned and plastic affected, 1983 and 1987 sets with spot of foxing on case linings and certificates, otherwise uncirculated - FDC.* (12)

\$80

1968

Elizabeth II, proof sets, 1987 (2), 1989 (S.PS39 [2], 43) (3); mint sets, 1985, 1986 (2), 1987, 1988 (3), 1989 (S.US04, 05 [2], 06, 07 [3], 08) (8); proof silver one pound, 1987 (S.4333); specimen five pounds, 1990 Queen Mother 90th (S.4301); mint crown, 1980 (S.4228); specimen crowns, 1981 (9 on cards) (S.4229) (9); Farewell to £1 Note Welcome to £1 Coin set of two in folder; Elizabeth II commemorative medal in solid gilding metal by Sandhill Bullion, cased. *In packs and cases of issue, uncirculated - FDC.* (25)

\$150

1969

Edward III - George IV, includes Edward III (1327-77) penny and Henry VII (1485-1509) half groat, both with areas missing around edge, also Elizabeth I, (1558-1603), sixth issue, 1582-1600, penny, mm scallop (S.2580); Maundy pennies, George III, 1800, 1817, 1818 and George IV, 1824 (S.3761, 3796 [2], 3821) (4). *Poor - extremely fine.* (7)

\$100

1970

George II - George V, farthing, 1744 (S.3721); Queen Victoria, Gothic florin, 1883 (S.3900), Jubilee coinage, crown, 1887, 1889, double florin, 1887 Arabic 1, halfcrown, 1890 (S.3921 [2], 3923, 3924) (4), old head, halfcrown, 1898 (S.3938); Edward VII, halfcrown, 1906 (S.3980); George V, first coinage, halfcrown, 1912, florins, 1913, 1915, 1918, 1919 (S.4011, 4012 [4]) (5), fourth coinage, halfcrowns, 1928, 1929 (4), florins, 1928, 1930 (S.4037 [5], 4038 [2]) (7). *Fine - good very fine.* (20)

\$240

1971

George III - Elizabeth II, George III, cartwheel twopence, 1797, halfpennies, 1806 (2) (S.3776, 3781 [2]) (3); George IV, farthing, 1823 (S.3822); Queen Victoria, young head, penny, 1853, 1879, 1885, farthing, 1878, 1893 (2), half farthing, 1844 (S.3948, 3954 [2], 3958 [3], 3951) (7); George V, Heaton Mint pennies, 1912H (S.4052) (2); George VI, penny, 1947, farthings, 1947, 1948 (S.4114, 4116 [2]) (3); Elizabeth II, pennies, 1965, 1967 (4) (S.4157) (5); also Cambridgeshire County halfpenny, 1795 (D&H 12). *The first with edge bumps, the last cleaned, overall very good - uncirculated.* (22)

\$60

1972

George IV - Elizabeth II, George IV, shilling, 1826 (S.3812); William IV, shilling, 1836, sixpence, 1834 (S.3835, 3836) (2); Queen Victoria, young head, halfcrown, 1883, sixpences, 1875 die 14, 1880, threepence, 1873 (S.3889, 3910, 3911, 3914C) (4), Jubilee coinage, halfcrown, 1889, shillings, 1887 (2), (S.3924, 3926 [2]) (3), old head, halfcrown, 1896, sixpence, 1900, Maundy twopence, 1897 (S.3938, 3941, 3946) (3); Edward VII, shilling, 1908, threepences, 1903, 1908 (S.3982, 3984 [2]) (3); George V, second coinage, florin, 1921, threepence, 1925 (S.4022A, 4026) (2); Elizabeth II, first issue, crown, 1953, shillings, 1953 (2), threepence, 1953 (S.4136, 4139 [2], 4152) (4). *Very good - uncirculated.* (22)

\$150

1973

Queen Victoria - Elizabeth II, threepences 1918, 1920 (4), 1932, 1936 (2), 1938; pennies 1863-1940 (16); halfpennies 1857-1935 (8); farthings 1885-1955 (11). *Very good - extremely fine.* (42)

\$50

1974

Edward VII - Elizabeth II, halfcrowns, 1906, proof 1970; florin 1945, sixpences 1936, 1939, 1944, threepences 1905, 1911, 1937, 1939, 1941, pennies, 1902, 1936. *Very fine - nearly FDC.* (13)

\$120



1975*

Suffolk, Woodbridge, Henry Stebbing, halfpenny, 1667 (Bird) (W.361 in copper). *Very fine and scarce.*

\$150

Ex Michael Trenerry, Truro with his ticket and Noble Numismatics Sale 86 (lot 3529).

1976

Middlesex, Christ's Hospital, penny, 1800 (cf.D&H 11). *Uniface, holed otherwise fine, very rare and unlisted.*

\$80

1977

Hop-pickers tokens and farm tokens, for fruit and vegetable pickers, mostly for Kent, some for Herefordshire; also Scottish Presbyterian Communion tokens (5). *Very fine - uncirculated.* (23)

\$100

Ex W.J.Noble Collection, Noble Numismatics Sale 61B (lot 503, missing A.May Halstead 1/2d).

1978

Daventry Co-op, 2lb loaf token, Frome Co-op, 1 pound loaf bread token, both these in aluminium; Guide Post Equitable Co-op, one pound in bronze, by Ardill Leeds; Leeds Indusl. Co-op, penny in brass; Portsea Island Mutual Co-op, twopence in bronze, by Ardill Leeds; Wales, Blaina Indusl. Society, one shilling in brass; C.W.S. Retail Co-op, Llanelly halfpenny in bronze. *Fine - very fine.* (7)

\$50

1979

Checks and tokens, Bartrop & Co, Swindon halfpenny in aluminium; Bell Brothers, North Shields penny in bronze; C&W Ltd, ten shillings in brass; W.Cussons Ltd, Hull. Leeds.Bradsford twenty shillings in bronze; Derby Corp Omnibuses penny in brass; Golden Parisian Revue, no value in bronze; Methodist Free Church, Newport threepence in bronze; Tredegar Ex-Servicemen's Club, no value in bronze; H.J.West, Outwell Basin five shillings in white metal; another for one pound in bronze; West End Club, Cudworth, no value in bronze; Williams Brothers, twopence in tin; another for five shillings in bronze; Earls Court Gigantic Wheel, 1901, no value in bronze; Orlando Jones, London farthing in bronze; Uxbridge School, Middlesex farthing in bronze; S.Lessy, Yarmouth farthing in bronze; Scotland, Middlemas, Edinburgh farthing in bronze. *In 2x2 holders with details, mostly very fine - nearly uncirculated.* (18)

\$100



1980*

Scotland, James VI, (1567-1625), a revaluation of 1578 of 36 Shillings, 9 Pence, by a thistle countermark on the reverse, the countermark of revaluation applied to a 1566 silver ryal of Mary and Henry Darnley (1565-1567), (29.89 g), obv. crowned Arms of the Kingdom of Scotland, flanked by thistles, around .MARIA . &. HENRIC'. DEI. GRA. R. &. R. SCOTORV, rev. tortoise climbs a crowned palm tree dividing date, scroll at centre, around .EXVRGAT. DEVS. & DISSIPENTR. INIMICI. EI'. thistle around, 15 66 across (S.5425 and Spink p.70 for countermarking). *Some corrosion on the obverse legend, weakness resulting from the countermark and slightly uneven in the legends, but mostly sharp and with surface marks, otherwise nearly very fine and rare.*

\$500

Ex Alan Jordan Collection.

*The Scottish situation was complicated by the arrival from France in 1560 of Queen Mary on the death of her young husband, Francis II. Mary, beautiful and charming yet without any political skill, moved from inexperience through attempts at religious inclusiveness and conciliation to exceptional

political incompetence, alienating Protestant politicians who had done their best to remain loyal to her. Her errors of judgment included tolerating the murder of her second husband-Henry Stewart, Lord Darnley-and marrying his murderer, a third husband-James Hepburn, Earl of Bothwell. The ensuing civil war resulted in a series of Protestant and mostly pro-English regimes. From 1567 they ruled in the name of James VI, Mary's infant son by Darnley, after she fled to the reluctant and embarrassed hospitality of Queen Elizabeth in England. Mary remained alive as an English prisoner for the next twenty years, heir presumptive to the English throne, and so a destabilising element in the politics of both England and Scotland'. (extract from Diarmaid MacCulloch, *The Reformation*, Viking, 2003)



1983*

Scotland, Charles I, (1625-1649), third coinage, 1637-1642, silver forty pence, obverse, bust to edge, reverse, B at end of reverse legend (S.5577); Charles II, second coinage, sixteenth dollar, 1677 (S.5624). *Toned, very fine and scarce.* (2)

\$300



1981*

Scotland, James VI, (1567-1625), a revaluation of 1578 of 36 Shillings, 9 Pence, by a thistle countermark on the reverse, the countermark of revaluation applied to a 1567 silver ryal or sword dollar of James VI first coinage (1567-1571), (29.97 g), obv. crowned Arms of the Kingdom of Scotland, flanked by crowned I R either side, around .IACOBVS 6 DEI GRATIA REX SCOTORVM, rev. around PRO ME SI MEREOR IN ME, crowned upright sword, to upper right XXX, hand pointing right in upper left; 15 67 across field; c/m: thistle in incuse to left of sword. (S.5472 and Spink p.70 for countermarking). *Toned, weak in places as usual, otherwise nearly very fine and rare.*

\$500

Ex Alan Jordan Collection.



1982*

Scotland, Charles I, (1625-1649), Falconer's issue, twelve shillings (S.5563). *Tooled on portrait, otherwise good fine.*

\$100



1984*

Scotland, Glasgow, Thistle Bank four shillings and ninepence on Mexico Charles III silver eight reales 1799FM (Manville 46, Davis 80). *Very fine and scarce.*

\$1,200

Ex Alan Jordan Collection and W.J. Noble Collection, Noble Numismatics Sale 58 (lot 1588) where it was purchased from Dolphin Coins in 1981 and previously from Spink. Manville records three examples on 1799 Mexico City eight reales coins and that listing includes this coin.

1985

Scotland, Burntisland Vitriol Company halfpenny, 1797 (D&H 2); Mackintosh Inglis & Wilson's Inverness halfpenny, 1794 (D&H 2a); Wales, Anglesey Mines halfpenny, 1788, 27 acorns variety (D7H 274); North Wales halfpenny, 1793 (D&H 8). *Fine - extremely fine.* (4)

\$100

1986

Ireland, James II, gunmoney coinage 1689-90, crown, 16(90) (S.6577) overstruck coin details visible; halfcrowns, 1689 Oct., 1689 Nov: (S.6579E, G) (2); two shillings and sixpence, 1690 May (2 types, one with die cracks) (S.6580B) (2); sixpence, 1689 Nov. (S.6853H). *Very good - very fine.* (6)

\$350

1987

Ireland, James II, gunmoney halfcrown, large size, Aug 1689 (14.31 g) (S.6579B, KM.95). *Very fine.*

\$60

Ex Alan Jordan Collection.



1988*
Ireland, James II, gunmoney halfcrown, 1689 Sepr, C punchmark on both sides (S.6579D). *Good very fine.*

\$100



1992*
Ireland, George III, bank token, thirty pence Irish, 1808 (S.6616A). *Very fine.*

\$150



1989*
Ireland, James II, gunmoney halfcrown, large size, Feb? 1689 (S.6579; KM.95). *Good fine.*

\$80



1993*
Ireland, Irish Free State, florin and halfcrown, 1931 (KM.7, 8); Republic, shilling, 1942 (KM.14). *Toned, extremely fine; extremely fine; uncirculated.* (3)

\$330



1990*
Ireland, George III, Bank of Ireland token, six shillings, 1804, leaf to left side of E (S.6615). *Very fine or better.*

\$250

Ex Alan Jordan Collection.

1994
Guernsey, Queen Victoria, eight doubles, 1885H, 1889H, four doubles, 1868, 1889H, double, 1899H (S.7206 [2], 7207 [2], 7209) (5); Edward VII, double, 1902H (S.7213); George V, double, 1911H (S.7217). *Good extremely fine - uncirculated.* (7)

\$200

Two slabbed by PCGS and the rest by National Numismatic Certification, graded from AU55 - MS65RB.



1991*
Ireland, George III, Bank of Ireland token, six shillings, 1804 (S.6615) no stop after Rex, top leaf points to upright of E, engraved as love token 'Gift of LJ to SR Aprl 8th 1809'. *Toned, nearly very fine.*

\$300



1995*
Guernsey, Queen Victoria, one double, 1893H, in gilt bronze (S.7209). *Uncirculated and extremely rare as a special finish presentation specimen.*

\$150



1996*
Isle of Man, George III, halfpenny, 1786 (S.3414). *Brown with trace of red, underlying brilliance, nearly uncirculated and rare this choice.*

\$150



2001*
Jersey, Queen Victoria, one thirteenth of a shilling, 1851 (S.7001). *Much mint red, uncirculated.*

\$170

Ex Status Sale 235 lot 9204.



1997*
Isle of Man, Queen Victoria, penny, 1839 (S.7417). *Small carbon spot on reverse, good extremely fine.*

\$100



2002*
Jersey, Queen Victoria, one thirteenth of a shilling, 1861 (S.7001). *Nearly extremely fine/extremely fine.*

\$70



2003
Jersey, Queen Victoria, one thirteenth of a shilling, 1858, some doubling to lettering and date, 1861 (S.7001). *The first with small toned area on obverse, good extremely fine, the second chocolate brown with small area of pitting behind neck, otherwise extremely fine. (2)*

\$200

1998*
Jersey, Queen Victoria, one thirteenth of a shilling, 1841 (S.7001). *Purple brown toning, virtually uncirculated.*

\$120

2004
Jersey, Queen Victoria, one thirteenth of a shilling, 1851, one twenty sixth of a shilling, 1841, 1858, one twelfth of a shilling, 1888 (S.7001, 7002 [2], 7006) (4); George V, one twelfth of a shilling, 1931, 1935 (S.7015) (2). *Nearly uncirculated - uncirculated. (6)*

\$350

1999
Jersey, Queen Victoria, one thirteenth of a shilling, 1841 (S.7001). *Some mint red, nearly uncirculated.*

\$100

Slabbed by National Numismatic Certification (4), Numismatic Guaranty Corporation and PCCS, graded from AU58BN - MS65RB.



2000*
Jersey, Queen Victoria, one thirteenth of a shilling, 1844 (S.7001). *Small carbon spot on reverse, some mint red, nearly uncirculated and a very scarce date.*

\$150



2005*
Jersey, Queen Victoria, one twenty sixth of a shilling, 1844 (S.7002). *Nearly full original mint red, uncirculated.*

\$100

Ex Status Sale 242 lot 9219.



2006*

Jersey, Queen Victoria, one twenty sixth of a shilling, 1851 (S.7002). *Some mint red, uncirculated.*

\$100

Ex Status Sale 242 lot 9220.

2007

Jersey, Queen Victoria, one twenty sixth of a shilling, 1861 (S.7002), first issue, one thirteenth of a shilling, 1866, 1870 (die crack at TORIA D. on obverse) (S.7004) (2), one twenty sixth of a shilling, 1870 (S.7005), second issue, one twenty fourth of a shilling, 1894 (S.7007). *The last with some mint red, very fine - uncirculated.* (5)

\$100



2008*

Jersey, Queen Victoria, one thirteenth of a shilling, 1871 (S.7004). *Much mint red, uncirculated.*

\$100

2009

Jersey, Queen Victoria, one twenty sixth of a shilling, 1866, 1871 (S.7005). *Both with some mint red, first coin a weak strike, uncirculated.* (2)

\$100



2010*

Jersey, Queen Victoria, proof one twelfth of a shilling, 1877 (S.7006). *Much mint red, FDC and rare.*

\$500

Ex Status Sale 246 lot 9318.

2011

Jersey, Queen Victoria, one twelfth of a shilling, 1877H, 1881, 1894 (S.7006). *The first with much mint red uncirculated, the second very fine, the last nearly uncirculated.* (3)

\$100

2012

Jersey, Queen Victoria, one twenty fourth of a shilling, 1877H, 1888, 1894 (S.7007). *Much mint red, uncirculated.* (3)

\$80



2013*

Jersey, Queen Victoria, one forty eighth of a shilling, 1877H (S.7008). *Much mint red, uncirculated.*

\$150

2014

Jersey, Edward VII, one twelfth of a shilling, 1909, one twenty fourth of a shilling, 1909 (S.7009, 7010). *The first with most mint red, uncirculated, the second with some mint red, nearly uncirculated.* (2)

\$100

2015

Jersey, George V, one twelfth of a shilling, first issue, 1911, 1913, 1923 (S.7012) (3), second issue, 1923, 1926 (S.7013) (2), third issue, 1931, 1933, 1935 (S.7016) (3). *Many with mint red, nearly uncirculated - uncirculated.* (8)

\$210

2016

Jersey, George V, one twenty fourth of a shilling, first issue, 1911, 1913, 1923 (S.7012) (3), second issue, 1923, 1926 (S.7014) (2), third issue, 1931, 1933, 1935 (S.7016) (3). *The 1913 nearly very fine, the rest extremely fine - uncirculated, some with mint red.* (8)

\$160

2017

Jersey, George VI, one twelfth of a shilling, first issue, 1937, 1946, 1947 (S.7017) (3), second (Liberation) issue, 1945 (S.7019); one twenty fourth of a shilling, 1937, 1946, 1947 (S.7018) (3). *Many with mint red, extremely fine - uncirculated.* (7)

\$100

2018

Jersey, Elizabeth II, five shillings, 1966 (2, Unc and Proof) (S.7020) (2); one quarter of a shilling, 1957, 1964 (2, Unc and Proof), 1966 (S.7021, 7021A [2], 7022) (4); one twelfth of a shilling, 1945 (54) Liberation, 1957, 1964 (2, Unc and Proof), 1960 Restoration Centenary, 1966 William I (2, Unc and Proof) (S.7023, 7024 [3], 7025, 7026 [2]) (7). *Uncirculated - FDC.* (13)

\$130

GREAT BRITAIN - HISTORICAL MEDALS



2019*

Elizabeth I, (1558-1603), Maurice, Prince of Orange, 1602, in silver (34mm), cast by G von Bijlaer, (Eimer 75, MI i, 181/182). *Toned, nearly very fine.*

\$300



2020*

Coronation of William and Mary, 1689, in silver (34.5mm) by Jean Roettiers (M.I.662/5, plate LXX/10; Eimer 309), obverse, conjoined, draped busts of William and Mary, reverse, Jove hurling thunder at Phaeton falling from his chariot, the earth in flames. *Good fine.*

\$170

2021

Gold Recoinage, 1775, in bronze (42mm) by J.Kirk (Eimer 762, BHM 202). *Extremely fine.*

\$150

2022

Preliminaries for Peace of Amiens, 1801, medalets (BHM 518, 522) (2); Peace of Amiens, 1802, in bronze (38mm) (BHM 542, holed), and in white metal (39mm) (BHM 543 [RRR]) pierced for suspension; Thanksgiving for Peace of Paris, 1814, in white metal (45mm) (BHM831 [RRR]); Battle of Waterloo medalet, 1815, in silvered bronze (25mm) (BHM 875). *Very fine.* (6)

\$120



2023*

Death of Francis Duke of Bedford, 1802, in bronze (43mm) by J. Hancock, (BHM 532), obverse, Francis bust left, reverse, shepherd leaning on broken column. *Traces of mint red, extremely fine.*

\$80

With original purchase ticket.

2024

Sir Walter Scott, Laudatory Medal, 1827, in bronze (62mm) (BHM 1312) by A.J.Stothard after F.Chantrey published by S.Parker, obverse, bare head of Sir Walter Scott right, SCOTT behind head, reverse, female leaning on column holding ribbon inscribed 'To Great Men', in exergue MDCCCXXVII, edge impressed 'Bardorum Citharas Patrio Qui Reddidit Istro' (He who restored the songs of the bards to their native lands). *Obverse edge bump, otherwise extremely fine.*

\$60

One of Parker's series of Great Men.



2026

Francis Chantrey, Art Union of London series, 1843, in bronze (55mm) by W.Wyon (BHM 2227, Eimer 1381), obverse, head of Chantrey right, reverse, Chantrey's sculptured monument of James Watt, edge impressed, 'ART-UNION OF LONDON 1843.' *Good very fine.*

\$60

With historical information.

2027

Queen Victoria, International Exhibition medal, 1862, in gilt bronze (22mm) (BHM 2752); Albert Prince of Wales, St Paul's Cathedral, 1872, in gilt bronze (23mm) (BHM 2934); Surrey County Football Association, Junior Cup Winners, 1900-01, in silver (28mm) with suspension loop, unnamed; R.M.S.Mauretania medal, made of metal from the old Mauretania (1906-35), in bronze (33mm) with suspension loop and original ribbon; also Calcutta Exhibition medal, 1883 & 1884, in silver (20mm) with suspension loop, obverse, monogram initials CIE in relief. *Very fine - extremely fine.* (5)

\$80

2025*

Masonic Lodge, Royal Arch Companions jewel, handcrafted and engraved in gilt silver, maker's name on reverse, 'Tho Harper, Fleet Street' (this dates the manufacture of the jewel to pre 1830 - see below). *Extremely fine and scarce.*

\$100

Thomas Harper was born in England in 1744. He was a goldsmith, councillor, a prominent freemason and a master of The Turners Company for the years 1813 & 1829. In his early twenties he emigrated to America and is noted as being in Charleston, South Carolina in 1767. Being a staunch loyalist to the crown, he was court martialled and forced to flee America for St Eustatius on the outbreak of the War of Independence in 1778. He returned briefly a few years later when Charleston was recaptured by the British, but when it fell he returned to England and settled in London, where he established a business as a goldsmith in a Fleet Street shop. As a freemason he published an edition of the Ahiman Rezon in 1800 and two others in 1807 and 1813. At the Union of the two Grand Lodges he opened the Especial Grand Lodge as Deputy Grand Master and by unanimous accord was fraternally requested to continue in office and fulfil the duties until the appointment and installation of a Grand Master, the Duke of Kent, who subsequently appointed and installed Harper as his Deputy. After a fire destroyed his property on Fleet Street in 1829, he moved to the Featherstone Buildings in Holborn where he died on 25th April 1832 aged 88.



2028*

London Highland Society, 1881, Tribute to the 42nd Regiment, in bronze (49mm) (BHM 512), inscribed around edge 'O'n Choumun Chaeleach D'on Fhreicheadan Dubh Na XLII Rt' (from the London Highland Society to the Black Watch or 42nd Regt). *Extremely fine.*

\$600

These medals were intended for presentation to the officers and men of the 42nd Regiment as a token of regard for the valour shown by the regiment in Egypt. The medals were never issued, however an example in gold was presented to the President of the Highland Society, the Duke of York, and one example each to Sir Ralph Abercromby's four sons.

2029

Diamond Jubilee of Queen Victoria, 1897, in silver (26mm) (BHM 3506); Coronation of King George V and Queen Mary, 1911, in bronze (35mm) (BHM 4055), in official case; Silver Jubilee of King George V and Queen Mary, 1935, in silver (32mm) (BHM 4249) (2, one in official box, this marked); Winston Churchill medal, undated, in silver (34mm) from Franklin Mint Churchill series; Princess Diana, 1961-1997, one ounce silver medal (39mm); various other medals, two of these in plastic cases. *Fine - uncirculated.* (10)

\$80

2030

Scottish Fanciers Club, undated (c1901), in bronze (39mm), unnamed; also athletic medals, obverse, arms with laurel wreath surround, reverse, open wreath, one in silver, reverse inscribed, 'Deterding/Challenge Cup/London. 1923/880 yards (flat) 2nd'; another identical but in bronze, reverse inscribed, 'De Kok/Challenge Cup/London. 1922/880 Yards. 3rd'. *The first uncirculated, the second cased, uncirculated, the last with toning, this speckly on reverse, otherwise extremely fine.* (3)

\$100

2031

British Arts & Crafts, 1901, in silver (39mm), multi sided award medal, reverse inscribed, 'Awarded to/Charles Procter/First Prize/For/Crystoleum Painting/Manchester Exhibition'; Godolphin School Games, Hammersmith, prize medal, undated, in bronze (44mm), obverse, school crest, reverse, open wreath, unnamed. *Good very fine; good extremely fine.* (2)

\$70



2032*

Edward VII, Royal Mint, coronation medal in gold (31 mm) by De Saulles (BHM3737; Eimer 1871). *Nearly uncirculated.*

\$700

Private purchase from R.Lobel 6/10/1978 and L.Filacouridis Collection.

2033

Rifle Club award medals, to A.C.King, silver (44mm x 36mm) engraved on obverse 'Finsbury/Rifle/MTC/1906'; silver (36mm x 31mm), engraved on obverse 'E-B-I/M-Co/1906' and on reverse 'Sgt G.King'; silver (44mm x 36mm) engraved on obverse 'Finsbury/Rifles/M.T.C./1907'; bronze (28mm x 36mm) engraved on reverse 'Finsbury Rifles/M.T.C./Championship/Sergt A.C.King/1908'; N.R.A. Rifle Club, bronze (42mm x 28mm) engraved on reverse 'Northampton Institute Rifle Club/Won by/A.C.King/1908-9'; Champion Bronze Badge 11th Lon Battn, bronze and enamel (39mm x 35mm) engraved on reverse 'Won by/Sergt A.C.King/'G' Comp/1909'; silver with gold overlay on obverse (44mm x 36mm) unengraved. *Very fine - extremely fine.* (7)

\$120

2034

Henry Bessemer, engineer and inventor, in bronze (58mm) by Pinches (BHM 2954, Eimer 1630), reverse, Bessemer bust left, reverse, Bessemer converter for steel manufacture within an ornamental escutcheon, edge inscribed, 'Harry Richard Knight, Session 1918-19'. *Extremely fine.*

\$60

2035

Masonic Lodge medals, Grand Lodge of Mark Master Masons Royal Arch jewel in silver, gilt and enamel, reverse inscribed, 'G.L.M.M.M/Presented to Bro. Jesse Johnson/Steward 1922'; RMBI 108th Festival 1950 Steward jewel in silvered gilt and enamel; RMGI Cumberland and Westmorland Steward 1949 jewel in silvered, gilt and enamel; Mark Master Masons Mark Degree Provincial breast jewel; Mark Master Masons Members breast jewel; another being a white Huguenot cross with blue oval centre featuring St John's red cross with crossed swords behind, helmet above and initials CBL around, with ribbon clasps for 1901, 1906, 1907. *Very fine - extremely fine.* (6)

\$100

2036

Masonic jewels, Royal Masonic Institution for Girls 1923, Steward, in silver and enamel; another for Steward 1951 in gilt and enamel; another for Steward 1960 in gilt and enamel; Royal Masonic Institution for Boys, West Yorkshire, in silver and enamel (hallmark for 1917); The Royal Masonic Institution for Boys, 1940, in silver and enamel. *Extremely fine.* (5)

\$100



2037*

Masonic Lodge, St Marylebone Chapter 1305 Past Z (head of Royal Arch Chapter) jewel, in 15ct gold (approx 15g), reverse inscribed, 'Presented to/E.Comp./Sydney Thomas Wilce Taylor/by the Chapter/1937-38'. *Uncirculated.*

\$350

2038

Masonic, Past Master collar jewel in silver, reverse inscribed, 'Fryent Lodge/No.6656/W.Bro. Philip Bysher/April 1949.'; Rose Croix 18th Degree collar jewel in silvered, gilt and enamel. *Both without ribbons, the first dark toned, the second with some verdigris at bottom edge of reverse, otherwise good very fine - extremely fine.*

\$100

Philip Bysher was also a Founding Member of Greystoke Lodge in 1945 and was the ADC (Assistant Director of Ceremonies).

2039

The Surrey County Federation, prize medals (44.5mm) (4), obverse, Federation arms, reverse, Bakery & Confectionery Exhibition, all with the word Class die struck, first medal in gilt bronze inscribed, '28/1st/D.M.Goodall Ltd/1950', second medal in antique silvered bronze inscribed, '29/2nd/D.M.Goodall Ltd/1950', third medal in antique silvered bronze inscribed, '40/2nd./D.M.Goodall/1956', fourth medal in antique bronze inscribed, '39/Third/D.M.Goodall Ltd/1957'; Croydon & District Master Bakers Assocn Exhibition prize medals in silver (35mm), obverse, seated lady left holding a wreath in outstretched hand and with wheat stalks under left arm, shield in front and baker's products at sides, reverse, open wreath, one medal inscribed, '2nd prize/D.M.Goodall Ltd/1948', the other inscribed, 'Class 7/D.M.Goodall Ltd', this medal with suspension loop fitted; Prize Medal for Bermaline Bread, undated, in antique silvered bronze (39mm), obverse, bust of John Montgomerie 1850/1928 at sides, around, John Montgomerie 'Bermaline' Bread, reverse, open wreath of wheat, inside medal title, unnamed. *A few with boxes or part box, extremely fine - uncirculated.* (7)

\$100

2040

Brewers & Allied Trades International Exhibition & Market, prize medal in antique silver (44.5mm), obverse, robed female right pouring liquid from a jug held above her head into a goblet at her waist, wheat and berries at sides, reverse, open wreath, inscribed, '1952/Northern District/Malting Barley/Competition/W.A.Walker/Darlington', cased; Printing Stationery & Allied Trades Exhibition, 1914, prize medal in silver (35mm) by Fattorini & Sons, obverse, man at printing press leaning forward and studying a sheet of paper, books and quill pen at side, reverse, open wreath and awarded to, 'W.H.Coppard L.G/For/Guilds' Reunion/Exhibition Card/Competition'; Liverpool Education Committee School Attendance medal, 1913, in bronze (44.5mm), obverse, Liverpool arms, reverse, open wreath and text, inscribed to, 'Joseph Joyce/Bishop Goss', Public Elementary School, pierced hole at top for suspension loop. *The last with edge nicks and two small areas of verdigris, very fine, the rest extremely fine - uncirculated.* (3)

\$100

2041

Preston Guild, 1992, in bronze (irregular 66.5mm), obverse, seated Paschal lamb left, reverse, Guild Hall. *In case of issue with certificate stating designed, modelled and finished by Ron Dutton, limited edition number 2 purchased by Mr E G Downey, uncirculated.*

\$50

Ex John Downey Collection.

2042

Queen Victoria, sterling silver Proof Pattern Crowns (2), both dated 1840, one with milled edge and one with plain edge, obverse young portrait of Queen left, after W.Wyon. around VICTORIA D:G: BRITANNIARUM REG; F:D: 1840; reverse, St George and dragon after B. Pistrucci, 'model' in exergue. *Uncirculated.* (2)

\$100

From the 'Patina' Collection of retrospective patterns and proofs. Only 12 pieces were struck for each edge type in silver.

2043

Queen Victoria - Elizabeth II, coronation and jubilee medals and three Royal Visit issues, includes a few issues from Australia, New Zealand and South Africa. *Mostly pierced for suspension, all in base metal, good - extremely fine.* (23)

\$100