

## HOLEY DOLLARS AND DUMPS

Holey dollar, first time at auction since 1950s



1556\*

New South Wales, five shillings or holey dollar, 1813, struck on a Charles IIII Mexico City Mint eight reales, 1805 T.H. (dies A/9: I/9) (Mira-Noble 1805/21). *Almost upright countermarks adding to eye appeal, has been plugged at top, otherwise nearly very fine and very rare.*

\$30,000

Ex Lawson's Sale 1950s, ANS member Mrs Oppenhiemer of Walcha, NSW, then Spink Australia in 1976 to private owner, then a further sale 1981 to the late owner.

### High Grade NSW Dump 1813



1557\*

**New South Wales**, fifteen pence or dump, 1813 (Mira dies A/1). *Traces of the reverse of the Spanish American eight reales on the reverse, die axis at 20 degrees, even grey tone, reverse with old scratches from rim to base of 'F', one scratch goes further towards the 'H' in the centre, otherwise good very fine and rare, especially in this condition.*

\$18,000

Ex Noble Numismatics Sale 115 (lot 1237) and Sale 131 (lot 593).

## AUSTRALIAN GOLD COINS

### ADELAIDE ASSAY OFFICE

#### Early die state Adelaide pound 1852



1558\*

**Adelaide pound**, second type, 1852, crenellated inner circle on the reverse. *Well struck, early die state, extremely fine or better.*

\$20,000

Ex Noble Numismatics Sale 121 (lot 1150).



1559\*

**Adelaide pound**, second type, 1852, later die state with five raised dots above (2)2 c(arats) from a clashed die. *Good very fine and rare.*

\$15,000

Ex Chris Hall Collection, from IAG Sale 21/9/08 (lot 319).

#### PORT PHILLIP, KANGAROO OFFICE



1560\*

**Port Phillip**, Kangaroo Office, pattern copper fourpence, undated (cf Andrews 781 by W.J. Taylor, London), probably struck in 1970s by die engraver for David Gee (13.41g). *Good extremely fine.*

\$3,000

Private purchase from the Rare Coin Company, cf Noble Numismatics Sale 46 (lot 1508) for the AHF Baldwin original 1853 striking.

Brilliant and frosted proof 1857 Sydney Mint half sovereign rarity



1561\*

Queen Victoria, proof half sovereign 1857, wreathed head left, by L.C.Wyon (3.93g) plain edge, struck at the Royal Mint London. A brilliant and frosted proof in almost flawless condition, FDC and extremely rare.

\$60,000

Ex Chris Hall Collection, from Roxbury's sale 8/2/14 (lot 1199), earlier Spink Australia Sale 6 (lot 988) and probably J.G.Murdoch (1903) and A.H.F. Baldwin Collection.

Gem proof only year



1562\*

Queen Victoria, Melbourne mint proof half sovereign, 1890, proof only year. A brilliant and flawless proof, FDC and excessively rare.

\$40,000

Ex John G Murdoch Collection, July 1903 (lot 630), AHF Baldwin Collection and Spink Australia Sale 6 (lot 1006) private purchase from Monetarium with their ticket.

SYDNEY MINT SOVEREIGNS

Lettering variety of first type sovereign 1855



1563\*

Queen Victoria, first type, 1855, with filleted head left by James Wyon. *Softly struck bar in first E of sovereign missing, nearly extremely fine, the only one seen with this variety.*

\$7,000

Ex Chris Hall Collection, from Noble Numismatics Sale 92 (lot 1345).



1564\*

Queen Victoria, first type, 1856. *Heavy surface marks, otherwise very fine.*

\$4,000

Ex Chris Hall Collection, from Noble Numismatics Sale 92 (lot 1347).



1565\*

Queen Victoria, second type, 1857. *Good fine.*

\$900

Ex Chris Hall Collection, from Noble Numismatics Sale 92 (lot 1349).



1566\*  
Queen Victoria, second type, 1858. *Very fine and rare in this condition.*

\$1,250

Ex Chris Hall Collection, from Noble Numismatics Sale 91 (lot 1324).



1569\*  
Queen Victoria, second type, 1860. *Very fine and rare.*

\$1,500

Ex Chris Hall Collection, from Noble Numismatics Sale 91 (lot 1326).



1567\*  
Queen Victoria, second type, 1859. *Very fine.*

\$1,000

Ex Chris Hall Collection, from Noble Numismatics Sale 91 (lot 1325).



1570\*  
Queen Victoria, second type, 1861/0 overdate. *Clear overdate, very fine and very rare.*

\$4,000

Ex Chris Hall Collection, from Downies Sale 25/10/11 (lot 693).



1568\*  
Queen Victoria, second type, 1860, 6 over 5. *Nearly uncirculated and extremely rare, first known of the variety.*

\$8,000

Ex Chris Hall Collection, from Noble Numismatics Sale 92 (lot 1351).



1571\*  
Queen Victoria, second type, 1861. *Extremely fine.*

\$1,250

Ex Chris Hall Collection, from Noble Numismatics Sale 93 (lot 1298).



1572\*  
 Queen Victoria, second type, 1862. *Nearly uncirculated.*  
 \$4,200  
 Ex David Ross Collection from Spink Australia Sale 27 (lot 1443).



1574\*  
 Queen Victoria, second type, 1863. *Some original mint bloom, nearly uncirculated and rare in this condition.*  
 \$2,400  
 Ex David Ross Collection from Spink Australia, private purchase July '86.



1573\*  
 Queen Victoria, second type, 1862. *Original frosty mint bloom, good extremely fine and rare.*  
 \$2,800  
 Ex David Ross Collection, from Spink Australia Sale 19 (lot 2479).



1575\*  
 Queen Victoria, second type, 1863. *Extremely fine/good extremely fine and rare thus.*  
 \$2,000  
 Ex Chris Hall Collection, from Noble Numismatics Sale 93 (lot 1302).



1576\*  
 Queen Victoria, second type, 1864. *Extremely fine.*  
 \$1,500  
 Ex Chris Hall Collection, from Noble Numismatics Sale 91 (lot 1332).

SYDNEY MINT HALF SOVEREIGNS



1577\*  
**Queen Victoria, second type, 1865. Nearly fine.** \$750

Ex Chris Hall Collection, from Noble Numismatics Sale 92 (lot 380).



1578\*  
**Queen Victoria, second type, 1866. Considerable mint bloom, extremely fine.** \$1,250

Ex Chris Hall Collection, from Noble Numismatics Sale 91 (lot 1334).



1579\*  
**Queen Victoria, second type, 1867. Good very fine.** \$850

Ex Chris Hall Collection, from Noble Numismatics Sale 92 (lot 545).



1580\*  
**Queen Victoria, second type, 1868. Subdued mint bloom, toned nearly uncirculated and rare thus.** \$2,500

Ex Chris Hall Collection, from IAG Sale 13/9/19 (lot 275).



1581\*  
**Queen Victoria, second type, 1870. Two cuts in reverse field, otherwise nearly uncirculated.** \$1,250

Ex Chris Hall Collection, from Noble Numismatics Sale 91 (lot 1337).

Very rare first date half sovereign



1582\*  
**Queen Victoria, first type, 1855. Heavily but evenly worn, date clear, fair and very rare.** \$5,000



1583\*  
**Queen Victoria, first type, 1856. Surface marks, nearly extremely fine.** \$3,500

Ex David Ross Collection from Spink Australia Sale 20 (lot 768).



1584\*  
**Queen Victoria, second type, 1857. Nearly extremely fine.** \$1,500

In a slab by NGC as AU53.





1585\*  
**Queen Victoria, second type, 1859. *Good extremely fine.***  
 \$4,200

Ex David Ross Collection from Noble Numismatics Sale 57 (lot 1471).



1588\*  
**Queen Victoria, second type, 1861. *Good extremely fine.***  
 \$3,500

Ex David Ross Collection from Spink Australia Sale 26 (lot 838).



1586\*  
**Queen Victoria, second type, 1860. *Slight bend, nearly fine and rare.***  
 \$450



1587\*  
**Queen Victoria, second type, 1861/0. *Clear overdate, nearly very fine and rare.***  
 \$900

In a slab by NGC as XF40.



1589\*  
**Queen Victoria, second type, 1862. *Die break rim to neck beside 8, dull tone good very fine.***  
 \$1,400

Ex David Ross Collection from KJC March 2002.



1590\*  
**Queen Victoria, second type, 1863. *Nearly uncirculated and rare in this condition.***  
 \$5,200

Ex David Ross Collection from KJC in Dec 05.



1591\*  
**Queen Victoria, second type, 1864. *Die break rim through 4 to neck, nearly extremely fine.***  
 \$1,650

Ex David Ross Collection from KJC Oct '03.



1592\*  
**Queen Victoria**, second type, 1865. *Extremely fine and rare in this condition.*

\$5,200

Ex David Ross Collection from KJC Oct '04.



1593\*  
**Queen Victoria**, second type, 1866. *Good very fine.*

\$1,000

In a slab by NGC as AU55.

### IMPERIAL SOVEREIGNS - SHIELD REVERSE



1594\*  
**Queen Victoria**, 1871 Sydney, WW incuse (McD.118a). *Peripheral die break either side, nearly uncirculated.*

\$1,000

Ex Chris Hall Collection, from Noble Numismatics Sale 91 (lot 1346).



1595\*  
**Queen Victoria**, 1872/1 overdate, Melbourne. *Die break neck to rim through overdate 2, extremely fine and very rare in this die state.*

\$3,000

In a slab by PCGS as AU55.



1596\*  
**Queen Victoria**, 1872/1, overdate, Melbourne. *Good fine and rare.*

\$900

Ex Chris Hall Collection, from Noble Numismatics Sale 93 (lot 1325).



1597\*  
**Queen Victoria**, 1872 Melbourne. *Good very fine.*

\$800

Ex Chris Hall Collection, from Noble Numismatics Sale 93 (lot 1741).



1598\*  
**Queen Victoria**, 1872 Sydney, possibly 1872/1 overdate. *Obverse rim nick at 1, good extremely fine and rare in this die state.*

\$2,000

In a slab by PCGS as AU58.



1599\*  
**Queen Victoria, 1872 Sydney. *Nearly uncirculated.***  
 \$1,050

Ex David Ross Collection, from KJC in August 2005.



1604\*  
**Queen Victoria, 1877 Sydney. *Toned extremely fine.***  
 \$750

Ex Chris Hall Collection, from Downies Sale 22/2/11 (lot 1477).



1600\*  
**Queen Victoria, 1872 Sydney. *Extremely fine/good extremely fine.***  
 \$900

Ex Chris Hall Collection, from Noble Numismatics Sale 95 (lot 508).



1605\*  
**Queen Victoria, 1878 Sydney. *Nearly uncirculated.***  
 \$900

Ex Chris Hall Collection, from Noble Numismatics Sale 92 (lot 1385).



1601\*  
**Queen Victoria, 1873 Sydney. *Good very fine.***  
 \$750

Ex Chris Hall Collection, from Noble Numismatics Sale 93 (lot 1743 part).



1606\*  
**Queen Victoria, 1879 Sydney. *Obverse lightly toned, uncirculated.***  
 \$900

Ex Chris Hall Collection, from Noble Numismatics Sale 103 (lot 1347).



1602\*  
**Queen Victoria, 1874 Melbourne. *Nearly uncirculated and rare in this condition.***  
 \$1,250

Ex Chris Hall Collection, from Noble Numismatics Sale 95 (lot 1367).



1603\*  
**Queen Victoria, 1875 Sydney. *Good very fine.***  
 \$750

Ex Chris Hall Collection, from Noble Numismatics Sale 93 (lot 1743 part).



1607\*  
**Queen Victoria**, 1879 Sydney, C over O in Victoria (McD.126a). *Nearly extremely fine/good extremely fine, with considerable mint bloom, a very clear re-entry with diagnostic die break from the rim to the C, extremely rare and one of the finest known.*

\$5,000

In a slab by PCGS as AU53.

Ex Chris Hall Collection, from IAG Sale 13/4/14 (Lot 348).



1608\*  
**Queen Victoria**, 1880 Melbourne. *Good very fine/nearly extremely fine and very rare.*

\$3,500

In a slab by NGC as AU50.



1609\*  
**Queen Victoria**, 1880 Melbourne. *Nearly very fine and very rare.*

\$2,000

Ex Chris Hall Collection, from Noble Numismatics Sale 95 (lot 1376).



1610\*  
**Queen Victoria**, 1880 Sydney, inverted A for V in Victoria.  
*Extremely fine or better and extremely rare, one of the finest known.*

\$6,000

Ex Chris Hall Collection, from Downies Sale 7/7/10 (lot 305).



1611\*  
**Queen Victoria**, 1880 Sydney. *Full mint bloom, choice uncirculated, one of the finest known.*

\$2,500

Ex Chris Hall Collection, from Noble Numismatics Sale 91 (lot 1355).



1612\*  
**Queen Victoria**, 1881 Melbourne. *Nearly extremely fine/ extremely fine and scarce.*

\$1,000

Ex Chris Hall Collection, from Noble Numismatics Sale 94 (lot 1422).



1613\*  
**Queen Victoria**, 1882 Melbourne. *Extremely fine.*

\$800

Ex Chris Hall Collection, from Noble Numismatics Sale 95 (lot 528).



1614\*  
**Queen Victoria**, 1882 Sydney. *Light subdued mint bloom, good extremely fine.*

\$900



1615\*  
**Queen Victoria**, 1883 Melbourne. *Reverse rim bruise at 2, otherwise nearly extremely fine/extremely fine and very scarce.*

\$1,500

Ex Chris Hall Collection, from Noble Numismatics Sale 92 (lot 1386).



1616\*  
**Queen Victoria**, 1883 Melbourne. *Nearly extremely fine/ extremely fine and scarce.*

\$900

In a slab by NGC as AU55.



1617\*  
**Queen Victoria**, 1883 Sydney. *Nearly extremely fine.*

\$750

Ex Chris Hall Collection, from Noble Numismatics Sale 92 (lot 572).



1618\*  
**Queen Victoria, 1884 Melbourne. *Nearly uncirculated.***  
 \$900

Ex Chris Hall Collection, from IAG Sale 2/9/11 (lot 417).



1619\*  
**Queen Victoria, 1884 Sydney. *Obverse light tone, nearly uncirculated.***  
 \$1,000

Ex Chris Hall Collection, from Downies Sale 27/10/10 (lot 1657).



1620\*  
**Queen Victoria, 1885 Melbourne. *Nearly uncirculated.***  
 \$900

Ex Chris Hall Collection, from Noble Numismatics Sale 91 (lot 1359).



1622\*  
**Queen Victoria, 1886 Melbourne. *Obverse surface marks, extremely fine/good extremely fine and very rare.***  
 \$12,000

Ex Chris Hall Collection, Noble Numismatics 96 (lot 1406).



1621\*  
**Queen Victoria, 1885 Sydney. *Uncirculated.***  
 \$1,000

Ex Chris Hall Collection, from Noble Numismatics Sale 91 (lot 1360).



1623\*  
**Queen Victoria, 1886 Sydney. *Die break rim through 6 to truncation, rubbed, uncirculated.***  
 \$1,250

Ex Chris Hall Collection, from Downies Sale 27/10/10 (lot 1661).



1624\*  
**Queen Victoria, 1886 Sydney. *Tiny die break rim through 6 to truncation, original subdued mint bloom, nearly uncirculated.***  
 \$1,000

IMPERIAL SOVEREIGNS - ST GEORGE REVERSE



1625\*  
Queen Victoria, 1887 Melbourne. *Nearly extremely fine/ extremely fine and rare.*

\$4,000

Ex Chris Hall Collection, from Noble Numismatics Sale 92 (lot 1390).



1626\*  
Queen Victoria, 1887 Melbourne. *Nearly extremely fine/ extremely fine and rare.*

\$3,500

In a slab by NGC as AU50.



1627\*  
Queen Victoria, 1887 Sydney. *Uncirculated, scarce thus.*

\$1,250

Ex Chris Hall Collection, from Noble Numismatics Sale 91 (lot 1364).



1628\*  
Queen Victoria, 1871 Sydney, small BP (McD.143a). *Rubbed and cleaned, otherwise nearly extremely fine/good extremely fine.*

\$700



1629\*  
Queen Victoria, 1872 Melbourne. *Very fine and very scarce.*

\$900

Ex Chris Hall Collection, from Noble Numismatics Sale 92 (lot 1392).



1630\*  
Queen Victoria, 1872 Sydney. *Some mint bloom, nearly uncirculated.*

\$850

Ex Chris Hall Collection, from Noble Numismatics Sale 91 (lot 1367).



1631\*  
Queen Victoria, 1873 Melbourne. *Extremely fine.*

\$900

Ex Chris Hall Collection, from Noble Numismatics Sale 93 (lot 1346).



1632\*  
Queen Victoria, 1873 Sydney. *Very fine.*

\$650

Ex Chris Hall Collection, from Noble Numismatics Sale 93 (lot 1756).



1633\*  
**Queen Victoria, 1874/3 overdate Melbourne. Full satin-like original mint bloom, uncirculated and extremely rare.**  
 \$2,000

Ex Chris Hall Collection, from Noble Numismatics Sale 94 (lot 1429).



1634\*  
**Queen Victoria, 1874 Sydney. Subdued mint bloom, uncirculated and one of the finest known.**  
 \$2,000

Ex Chris Hall Collection, from Noble Numismatics Sale 92 (lot 1394).



1635\*  
**Queen Victoria, 1875 Melbourne. Choice uncirculated and rare thus.**  
 \$3,000

Ex Chris Hall Collection, from Noble Numismatics Sale 92 (lot 1395).



1636\*  
**Queen Victoria, 1875 Sydney. Toned uncirculated.**  
 \$1,250

Ex Chris Hall Collection, from Noble Numismatics Sale 91 (lot 1372).



1637\*  
**Queen Victoria, 1876 Melbourne. Gem uncirculated and rare thus.**  
 \$3,000

Ex Chris Hall Collection, from Roxbury's Sale 13/2/10 (lot 1257).



1638\*  
**Queen Victoria, 1876 Sydney. Lightly toned, nearly uncirculated.**  
 \$900

Ex Chris Hall Collection, from Noble Numismatics Sale 94 (lot 1432).



1639\*  
**Queen Victoria, 1877 Melbourne. Full original mint bloom uncirculated.**  
 \$1,000

Ex Chris Hall Collection, from Noble Numismatics Sale 92 (lot 1398).



1640\*  
**Queen Victoria, 1878 Melbourne. Choice uncirculated, original mint bloom, one of the finest known.**  
 \$1,750

Ex Chris Hall Collection, from Noble Numismatics Sale 91 (lot 1375).





1641\*  
Queen Victoria, 1879 Melbourne (McD.157). *Extremely fine.*

\$800



1646\*  
Queen Victoria, 1880 Sydney (McD. 158b). *Nearly uncirculated.*

\$900

Ex Chris Hall Collection, from Noble Numismatics Sale 94 (lot 1442).



1642\*  
Queen Victoria, 1879 Melbourne (McD.157a). *Attractive colour, uncirculated and rare thus.*

\$1,250

Ex Chris Hall Collection, from Noble Numismatics Sale 91 (lot 1376).



1647\*  
Queen Victoria, 1881 Melbourne (McD.161). *Choice uncirculated.*

\$1,250

Ex Chris Hall Collection, from Noble Numismatics Sale 91 (lot 1381).



1643\*  
Queen Victoria, 1879 Sydney. *Good extremely fine or nearly uncirculated and rare in this condition.*

\$1,500

In a slab by PCGS as AU58.



1648\*  
Queen Victoria, 1881 Melbourne, no BP (McD 161a). *Nearly uncirculated.*

\$800



1644\*  
Queen Victoria, 1879 Sydney. *Extremely fine and very scarce in this condition.*

\$1,000

Ex Chris Hall Collection, from Noble Numismatics Sale 92 (lot 1404).



1649\*  
Queen Victoria, 1881 Sydney, no BP (McD.160a). *Good extremely fine/nearly uncirculated.*

\$900

Ex Chris Hall Collection, from Noble Numismatics Sale 95 (lot 1420).



1645\*  
Queen Victoria, 1880 Melbourne (McD.159a). *Nearly uncirculated.*

\$800

Ex Chris Hall Collection, from Roxbury's Sale 13/2/10 (lot 1268).



1650\*  
Queen Victoria, 1882 Melbourne (McD.163a). *Nearly extremely fine.*

\$650

Ex Chris Hall Collection.



1651\*  
Queen Victoria, 1882 Sydney, faint BP (McD.162a). *Toned obverse, uncirculated.*

\$1,250

Ex Chris Hall Collection, from Noble Numismatics Sale 92 (lot 1405).



1652\*  
Queen Victoria, 1883 Melbourne (McD.165b). *Full original mint bloom, uncirculated.*

\$1,000

Ex Chris Hall Collection, from Noble Numismatics Sale 91 (lot 1385).



1653\*  
Queen Victoria, 1883 Sydney. *Extremely fine.*

\$700

Ex Chris Hall Collection, from Noble Numismatics Sale 92 (lot 1407).



1654\*  
Queen Victoria, 1884 Melbourne, no BP (McD 167). *Very fine and very rare, only four others known.*

\$1,000



1655\*  
Queen Victoria, 1884 Melbourne (McD.167a). *Nearly uncirculated.*

\$850

Ex Chris Hall Collection, from Noble Numismatics Sale 91 (lot 480).



1656\*  
Queen Victoria, 1884 Melbourne (McD 167b). *Subdued mint bloom good extremely fine.*

\$800



1657\*  
Queen Victoria, 1884 Sydney. *Frosty mint bloom, nearly uncirculated, rare thus.*

\$1,250

Ex Chris Hall Collection, from Noble Numismatics Sale 92 (lot 1411).



1658\*  
Queen Victoria, 1885 Melbourne (McD 169c). *Good extremely fine.*

\$800



1659\*  
Queen Victoria, 1885 Sydney. *Nearly uncirculated.*

\$850



1660\*  
Queen Victoria, 1886 Melbourne (McD 171). *Nearly uncirculated.*

\$800



1661\*  
Queen Victoria, 1886 Melbourne. *Nearly uncirculated.*

\$750

Ex Chris Hall Collection, from Noble Numismatics Sale 91 (lot 487).



1662\*  
**Queen Victoria, 1886 Sydney. Nearly uncirculated.** \$850  
 Ex Chris Hall Collection, from Noble Numismatics Sale 91 (lot 495).



1668\*  
**Queen Victoria, Jubilee head, 1887 Sydney (McD.174b). Extremely fine and scarce thus.** \$1,200

Ex Chris Hall Collection, from Downies Sale 24/2/10 (lot 304).



1663\*  
**Queen Victoria, young head, 1887 Melbourne. Nearly uncirculated.** \$800  
 Ex Chris Hall Collection, from Noble Numismatics Sale 91 (lot 496).



1669\*  
**Queen Victoria, Jubilee head, 1887 Sydney (McD.174b). Extremely fine.** \$1,050

Ex David Ross Collection, from Noble Numismatics in January 1996.



1664\*  
**Queen Victoria, young head, 1887 Sydney. Choice uncirculated and very scarce in this condition.** \$1,250  
 Ex Chris Hall Collection, from IAG Sale 13/9/09 (lot 276).



1670\*  
**Queen Victoria, 1888 Melbourne (McD.177). Nearly uncirculated and scarce.** \$750

Ex Chris Hall Collection, from Noble Numismatics Sale 94 (lot 1467).



1665\*  
**Queen Victoria, Jubilee head, 1887 Melbourne (McD.175). Nearly uncirculated.** \$750  
 Ex Chris Hall Collection, from Noble Numismatics Sale 92 (lot 1414).



1671\*  
**Queen Victoria, 1888 Sydney (McD.176). Nearly uncirculated.** \$750

Ex Chris Hall Collection, from Noble Numismatics Sale 94 (lot 1460).



1666\*  
**Queen Victoria, Jubilee head, 1887 Melbourne (McD.175a). Well struck, nearly uncirculated.** \$900



1672\*  
**Queen Victoria, 1888 Sydney (McD.176c). Surface marks, some mint bloom, extremely fine/good extremely fine.** \$700



1667\*  
**Queen Victoria, Jubilee head, 1887 Melbourne (McD.175a). Good extremely fine.** \$900



1673\*  
**Queen Victoria, 1889 Melbourne. *Nearly uncirculated.***  
 \$700

Ex Chris Hall Collection, from Downies RBA sale 29.11.05 and eBay 10/4/10.



1678\*  
**Queen Victoria, 1892 Sydney. *Choice uncirculated, one of the finest known.***

\$900

Ex Chris Hall Collection, from Noble Numismatics Sale 92 (lot 1404).



1674\*  
**Queen Victoria, 1889 Sydney. *Uncirculated/choice uncirculated.***  
 \$750

Ex Chris Hall Collection, from IAG Sale 13/9/09 (lot 277).



1679\*  
**Queen Victoria, Jubilee head, 1893 Melbourne. *Nearly uncirculated.***  
 \$850

Ex Chris Hall Collection, from Noble Numismatics Sale 94 (lot 1477).



1675\*  
**Queen Victoria, 1891 Melbourne (McD.183a). *Nearly uncirculated.***  
 \$800

Ex Chris Hall Collection, from Downies Sale 25/10/11 (lot 719).



part  
 1680\*  
**Queen Victoria, Jubilee head, 1893 Melbourne (McD 188a and 188b medium tail) the second illustrated. *Very fine; good very fine and rare, only one other medium tail known.* (2)**  
 \$1,800



1676\*  
**Queen Victoria, 1891 Sydney (McD 182). *Nearly uncirculated.***  
 \$750



1681\*  
**Queen Victoria, old head, 1893 Melbourne. *Mirror-like fields, nearly uncirculated and scarce thus.***  
 \$900

Ex Chris Hall Collection, from Noble Numismatics Sale 94 (lot 1478).



1677\*  
**Queen Victoria, 1892 Melbourne. *Choice uncirculated.***  
 \$800

Ex Chris Hall Collection, from Noble Numismatics Sale 92 (lot 1416).



1682\*  
**Queen Victoria, old head, 1893 Sydney. *Nearly uncirculated.***  
 \$850



1683\*  
**Queen Victoria**, old head, 1893 Sydney. *Toned nearly uncirculated.*

\$750

Ex Chris Hall Collection, from Noble Numismatics Sale 94 (lot 1865 part).



1687\*  
**Queen Victoria**, 1898 Melbourne. *Good extremely fine.*

\$750



1688\*  
**Queen Victoria**, 1899 Melbourne. *Uncirculated.*

\$700



part

1684\*  
**Queen Victoria**, old head, 1893-1901 Sydney. *Extremely fine - choice uncirculated.* (9)

\$6,000

Ex Chris Hall Collection, all but the second last from Noble Numismatics Sales 92-95.



1689\*  
**Queen Victoria**, 1899 Perth. *Toned obverse, nearly extremely fine/nearly uncirculated and scarce.*

\$1,000

Ex Chris Hall Collection, private purchase 22/8/09.



part

1685\*  
**Queen Victoria**, 1894-1901 Melbourne. *Nearly uncirculated - choice uncirculated.* (8)

\$5,500

Ex Chris Hall Collection, first from IAG sale 13/9/09 (lot 1279), third from Downies Sale 27/10/10 (lot 1670), others from Noble Numismatics Sale 91 (4), 92 (2).



part

1690\*  
**Queen Victoria**, 1900 and 1901 Perth. *Nearly uncirculated.* (2)

\$1,400

Ex Chris Hall Collection, from Noble Numismatics Sale 91 (lots 1417, 8).



1686\*  
**Queen Victoria**, 1894 Sydney. *Uncirculated.*

\$750



part

1691\*  
**Edward VII**, 1902-1910 Melbourne. *Nearly uncirculated - uncirculated.* (9)

\$5,500

Ex Chris Hall Collection



part

1692\*

**Edward VII, 1902-1910 Perth, missing 1904, offered separately as a slabbed coin. *Good extremely fine - nearly uncirculated.*** (8)

\$5,000

Ex Chris Hall Collection, the illustrated from *Monetarium* 14/1/09.



part

1693\*

**Edward VII, 1902-1910 Sydney. *Nearly uncirculated.*** (9)

\$5,500

Ex Chris Hall Collection, from Noble Numismatics Sale 87B.



1694\*

**Edward VII, 1904 Perth. *Nearly uncirculated.***

\$700

In a slab by NGS as MS61.

Ex Chris Hall Collection, from Noble Numismatics Sale 109A (lot 891).



part

1695\*

**George V, 1911-1918 Melbourne. *Nearly uncirculated - uncirculated, the 1915 with PCGS ticket as MS64.*** (8)

\$5,000

Ex Chris Hall Collection.



part

1696\*

**George V, 1911-1923 Perth. *The 1917 with NGC ticket as MS63, nearly uncirculated - uncirculated.*** (13)

\$8,000

Ex Chris Hall Collection, the 1917 from Roxbury's sale 12/2/11 (lot 1256), 1912-14 from Noble Numismatics Sale 93 (lot 1903), 1921 (lot 1302).



part

1697\*

**George V, 1911-1919, 1925 Sydney. *Nearly uncirculated - uncirculated.*** (10)

\$6,000

Ex Chris Hall Collection, the 1915 PCGS MS64 ticket, the 1918 (illus) from Noble Numismatics Sale 92 (lot 654), the 1915 from Roxbury sale 13/2/10 (lot 1337).



1698\*

**George V, 1919 Melbourne. *Nearly uncirculated and scarce.***

\$1,000

In a slab by PCGS as MS62.

Ex Chris Hall Collection, from Noble Numismatics Sale 107A (lot 1402).



1699\*

George V, 1920 Melbourne. *Uncirculated and very rare, especially in this condition.*

\$7,000

Ex Chris Hall Collection, from Noble Numismatics Sale 93 (lot 1395).



1700\*

George V, 1921 Sydney. *Nearly uncirculated and rare.*

\$3,500

Ex Chris Hall Collection, from Monetarium 10/3/09.



1701\*  
George V, 1921 Sydney. *Extremely fine or better and rare.*

\$2,100

Ex David Ross Collection, private purchase from Noble Numismatics July '98.

**Extremely rare 1922 Melbourne sovereign**



1702\*  
George V, 1922 Melbourne. *Good extremely fine and extremely rare.*

\$22,500

Ex Chris Hall Collection, from Noble Numismatics Sale 108 (lot 1346).



Extremely rare 1922 Sydney sovereign



1703\*

George V, 1922 Sydney. *Reverse rim bruise at 3, good extremely fine/nearly uncirculated and extremely rare.*

\$30,000

Ex Chris Hall Collection, from Noble Numismatics Sale 96 (lot 1463).



part

1704\*

George V, 1923-1926 Melbourne. *Nearly uncirculated - uncirculated.* (4)

\$2,600

Ex Chris Hall Collection, the 1925 from Downies Sale 25/10/11 (lot 677), the others from Noble Numismatics Sales 91 and 92 (lots 666, 1437).

Very rare 1923 Sydney sovereign



1705\*

George V, 1923 Sydney. *Nearly uncirculated and very rare.*

\$20,000

Ex Chris Hall Collection, from Pacific Rim Coins 6/4/09.

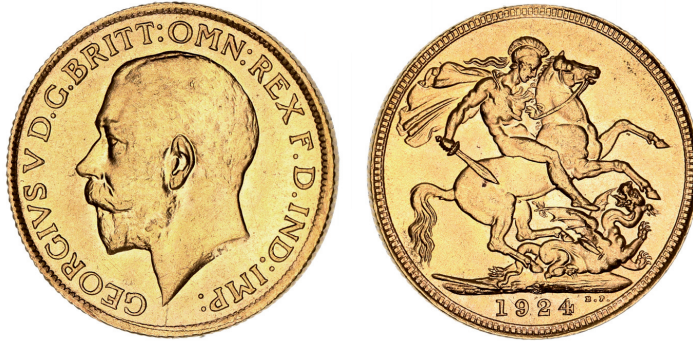


1706\*

George V, 1924 Perth. *Uncirculated and scarce.*

\$750

Ex Chris Hall Collection, from Downies Sale 27/10/10 (lot 1702).



1707\*

George V, 1924 Sydney. *Uncirculated and rare, especially in this condition.*

\$3,000

Ex Chris Hall Collection, from Monetarium 10/3/09.



1708\*

George V, 1924 Sydney. *Nearly uncirculated/uncirculated and very scarce.*

\$2,250

In a slab by NGC as MS62.



1709\*

George V, 1925 Perth. *Nearly uncirculated.*

\$700

Ex Chris Hall Collection, from Noble Numismatics Sale 90.



1710\*

George V, 1926 Perth. *Subdued dull tone, nearly uncirculated and very scarce.*

\$3,000

Ex Chris Hall Collection, from IAG Sale 13/9/09 (lot 283).

Extremely rare key date 1926 Sydney sovereign



1711\*

George V, 1926 Sydney. *Contact mark under neck, light satin-like tone, uncirculated and extremely rare.*

\$30,000

Ex Chris Hall Collection, from Roxbury's Sale 8/4/14 (lot 1202).



1712\*

George V, 1927 Perth. *Uncirculated and scarce.*

\$900

Ex Chris Hall Collection, from IAG 16/9/07.



1713\*

George V, 1928 Melbourne. *Extremely fine or better and rare.*

\$4,000

Ex Chris Hall Collection, from Noble Numismatics Sale 90.



1714\*  
George V, 1928 Perth. *Uncirculated.*

\$700

Ex Chris Hall Collection, from IAG 16/9/07.



1715\*  
George V, small head, 1929 Melbourne. *Uncirculated and rare.*

\$4,000

Ex Chris Hall Collection, from Noble Numismatics Sale 90.



part

1716\*  
George V, small head, 1929-1931 Perth. *Uncirculated.* (3)

\$2,000

Ex Chris Hall Collection, from Noble Numismatics Sale 87A (lot 1175).



1717\*  
George V, small head, 1930 Melbourne. *Nearly uncirculated and scarce.*

\$900

Ex Chris Hall Collection, from Noble Numismatics Sale 90.



1718\*  
**George V**, small head, 1931 Melbourne. *Hairline scratch on left obverse field, otherwise uncirculated and very scarce.*  
 \$1,250

Ex Chris Hall Collection, from Noble Numismatics Sale 90.



1723\*  
**Queen Victoria**, 1877 Melbourne (McD 18a). *Rubbed, otherwise very fine/good very fine.*

\$500

In a slab by NGC as XF45.

## IMPERIAL HALF SOVEREIGNS



1719\*  
**Queen Victoria**, 1871 Sydney. *Nearly extremely fine.*  
 \$650

In a slab by NGC as AU details cleaned.



1720\*  
**Queen Victoria**, 1872 Sydney. *Good extremely fine.*  
 \$1,400

Ex David Ross Collection, private purchase from KJC Sept 2004.



1721\*  
**Queen Victoria**, 1873 Melbourne. *Extremely fine.*  
 \$1,150

Ex David Ross Collection, private purchase from KJC May 2001.



1722\*  
**Queen Victoria**, 1875 Sydney. *Slight porosity, attempted cleaning by brush, otherwise extremely fine.*  
 \$1,000

In a slab by NGC as AU details cleaned.



1724\*  
**Queen Victoria**, 1879 Sydney. *Obverse hairline, nearly extremely fine/extremely fine.*

\$1,050

Ex David Ross Collection from KJC August 2005.



1725\*  
**Queen Victoria**, 1880 Sydney. *Nearly extremely fine.*  
 \$900

In a slab by NGC as AU53.

## Outstanding 1881 Melbourne half sovereign



1726\*  
**Queen Victoria**, 1881 Melbourne. *Peripheral breaks on the reverse, minor surface marks on the obverse, otherwise uncirculated/choice uncirculated and very rare in this condition, one of the finest known.*

\$5,000

Ex Noble Numismatics Sale 48 (lot 1636).





1727\*  
**Queen Victoria, 1881 Melbourne.** *Extremely fine/good extremely fine and rare.*

\$4,200

Ex David Ross Collection from KJC September 2007.



1728\*  
**Queen Victoria, 1881 Sydney.** *Good very fine/nearly extremely fine.*

\$750

In a slab by NGC as AU50.



1729\*  
**Queen Victoria, 1882 Melbourne (McD.24).** *Very fine.*

\$500

**Finest known half sovereign rarity**



1730\*  
**Queen Victoria, 1882 Sydney.** *Uncirculated/choice uncirculated and very rare in this condition, one of the finest known of this key date.*

\$15,000

Ex Noble Numismatics Sale 48 (lot 1637) earlier from Spink Noble Sale 39 (lot 1170).



1731\*  
**Queen Victoria, 1883 Sydney (McD.25a).** *Minute obverse hairline, good extremely fine/nearly uncirculated.*

\$1,400

Ex David Ross Collection from Spink Australia Sale 30 (Sharps Pixley Collection) (lot 1375).



1732\*  
**Queen Victoria, 1884 Melbourne.** *Very fine.*

\$500

Outstanding 1885 Melbourne half sovereign



1733\*

Queen Victoria, 1885 Melbourne. *Minor obverse hairlines, otherwise choice uncirculated and very rare in this condition, one of the finest known.*

\$10,000

Ex Spink Australia Sale 26 (lot 853) and Noble Numismatics Sale 48 (lot 1641).

Finest known young head half sovereign 1887 Melbourne



1736\*

Queen Victoria, young head, 1887 Melbourne. *Choice uncirculated and extremely rare in this condition, probably the finest known.*

\$15,000



1734\*

Queen Victoria, 1885 Melbourne. *Nearly extremely fine and rare.*

\$2,800

Ex David Ross Collection from KJC Dec 2005.



1737\*

Queen Victoria, young head, 1887 Melbourne. *Nearly extremely fine and rare.*

\$1,500

In a slab by NGC as AU53.



1738\*

Queen Victoria, Jubilee head, 1887 Sydney (McD.32b). *Good extremely fine.*

\$1,000



1735\*

Queen Victoria, 1886 Melbourne. *Good very fine.*

\$500



1739\*

Queen Victoria, 1891 Sydney (McD.38). *Nearly extremely fine.*

\$700

Ex David Ross Collection from KJC Dec 2005.



1740\*  
Queen Victoria, 1891 Sydney (McD 38a). *Nearly extremely fine.*

\$500

In a slab by NGC as AU55.



1741\*  
Queen Victoria, Jubilee head, 1893 Melbourne. *Good very fine.*

\$420

Ex David Ross Collection from KJC in January 2005.



1742\*  
Queen Victoria, old head, 1893 Sydney. *Nearly extremely fine.*

\$600

In a slab by PCGS as AU53.



1743\*  
Queen Victoria, 1896 Melbourne. *Extremely fine/nearly uncirculated.*

\$750

In a slab by PCGS as AU55.



1744\*  
Queen Victoria, 1896 Melbourne. *Good extremely fine.*

\$600



1745\*  
Queen Victoria, 1897 Sydney. *Nearly extremely fine.*

\$520

Private purchase June 2007.



1746\*  
Queen Victoria, 1900 Perth. *Good very fine and scarce thus.*

\$450

Ex D. Featherstone/ L. McNaught Collection



1747\*  
Edward VII, 1904 Perth. *Good very fine/very fine.*

\$500

In a slab by NGC as AU50.



1748\*  
Edward VII, 1908 Perth. *Light scratch behind ear, otherwise good very fine.*

\$500

In a slab by NGC as XF45.



1749\*  
George V, 1911 Perth. *Extremely fine and scarce.*

\$400





part

1750\*

**George V**, 1911, 1912, 1914, 1915 and 1916 Sydney. *Good extremely fine - nearly uncirculated.* (5)

\$1,500

Ex Chris Hall Collection, from Noble Numismatics Sale 90 (lot 1322) except the last from Sale 87a (lot 472 part).

1751

**George V**, 1915 Melbourne. *Nearly uncirculated.*

\$400

Ex Chris Hall Collection, from Noble Numismatics Sale 90 (lot 1323, part).



1752\*

**George V**, 1915 Perth. *Rim nicks, otherwise extremely fine or better.*

\$350



1753\*

**George V**, 1916 Sydney. *Choice uncirculated.*

\$500

In a slab by PCGS as MS15.